

An ISO 9001:2015 Certified company



**SHORT CATALOGUE**

**DEIKTIS TECHNOLOGIES PVT LTD**

[www.deiktistech.com](http://www.deiktistech.com)



# CERTIFICATE

This is to Certify that the Management System of

## DEIKTIS TECHNOLOGIES PVT. LTD.

Factory Address : Survey No.275/1/14, Gala No. 4, Ekta Industrial Estate,  
Damanganga Industrial Park – II, Karwad, Vapi, Valsad,  
Gujarat – 396 195, INDIA

has been audited and found to comply with the requirements of:

### ISO 9001:2015 (Quality Management System)

For the Scope of activities described below:

**Design, Manufacture and Supply of Pressure Gauges, Differential Pressure Gauges,  
Temperature Gauges, Chemical Seal Diaphragms, Resistance Temperature  
Detectors (RTD) & Thermocouples, Thermowells, Valves, Manifold,  
Tube fittings and all allied Accessories**

*Certificate No.: IN240214017*

<u>Date of initial registration</u>	<u>Date of this Certificate</u>	<u>Surv. audit on or before/ Certificate expiry</u>	<u>Recertification Due</u>
25 January 2023*	27 February 2025	24 January 2026	24 January 2026



Validity of this certificate is subject to successful completion of surveillance audit on or before due date, in case surveillance audit not conducted this certificate shall be suspended/cancelled.

\*Due to change in Procedural requirements Certificate Numbering has been changed from IN98202A to IN2402140017)

For verification and updated information concerning the present certificate  
This certificate is property of LMS Assessments Limited and remain  
and shall be returned immediately when demanded.

*Signature of Director*



**LMS Assessments Limited**  
International Office: Bartle House, Oxford Court, Manchester,  
M2 3WQ(United Kingdom) Phone : +44-161394 1117  
(Company Regd. No. 11029176 Registered in England and Wales)  
**LMS Assessment Services Private Limited**  
Corporate Office: TF14, 15 Aarohi arcade, Sector 16, Munshi Puliya,  
Indira Nagar, Lucknow - 16, India Phone : +91 955 464 5464  
Visit :- [www.lmscert.uk](http://www.lmscert.uk)/[www.lmscert.com](http://www.lmscert.com)  
E-mail :- [info@lmscert.uk](mailto:info@lmscert.uk)



LMS-FM-109/REV04

**ISO9001: 2015 CERTIFIED**

# ABOUT US

**Deiktis Technologies Pvt. Ltd. (DT)**, manufacturers and supplies a wide range of process instrumentation products such as Pressure & Temperature Gauges / Switches, RTDs, Thermocouples, Thermowells & Level Switches. These high precision products are designed and manufactured to International Quality norms with a focus on sourcing the best raw materials and superior state-of-the art technology. Experienced technical experts following excellent teamwork monitor manufacturing quality, reliability, adherence to specifications, calibration, functionality, and timely deliverables. Each Stage including Procurement, Production, Calibration, Testing and Delivery undergo stringent Quality Assurance Procedures in accordance with internationally accepted certifications.

**DT** is equipped to meet custom requirements of clients. In times to come, **DT** intends to expand range of products in accordance to business needs that so arise. **DT's** products find applications across all segments in the industry. At **DT**, the prerogative is 'customer engagement through delight'. Each Customer shall receive products of the highest Quality that exceed expectations.

**DT is an approved OEM in GeM as seller.**



**START-UP INDIA (DIPP) APPROVAL**



**MSME ZED APPROVED**

## QUALITY POLICY

Deiktis Technologies Pvt Ltd. will consistently strive to manufacture quality products and provide reliable services that exceeds the requirements/expectations from our Clients/Customers.

### Quality Objectives: -

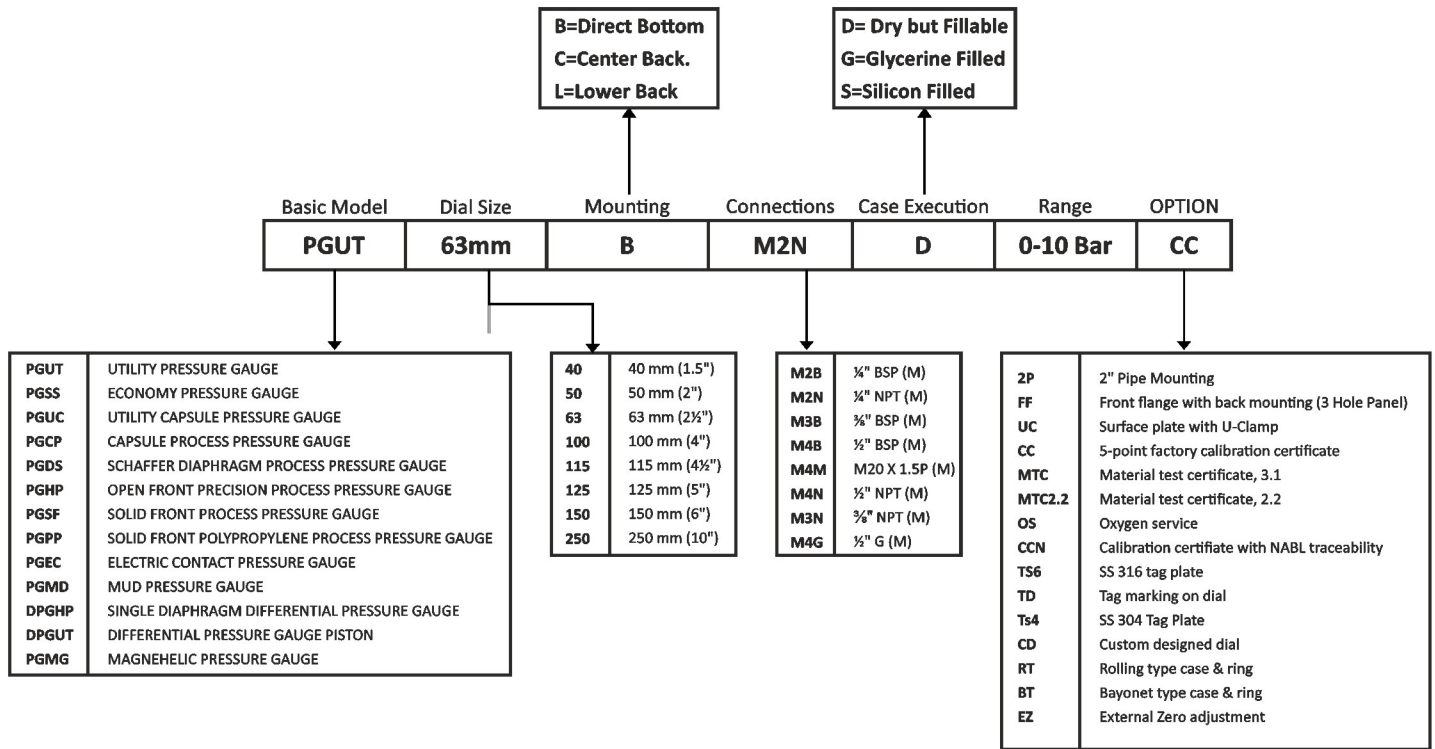
- **Production: -**
  - 100% of on time deliveries of Product.
  - 100% of on time reliable Services.
  - Zero defect.
- **Management: -**
  - 100% analysis of Customer feedback/suggestions.
  - Continual improvements by applying State of Art Technology and Innovation.

This Quality Policy governs our day-to-day operations to ensure quality and is Communicated / Understood / Implemented throughout the organisation.

Our Quality Objectives are established at senior management level and included in the Quality Management System, which is reviewed on a continuing basis through management review.

We will keep making continual improvement in our quality management system to increase its effectiveness through team work and regular training.

# NOMENCLATURE



## STANDARDS FOLLOWED

### FOR PRESSURE GAUGES:

ANSI/ASME B 40.100 – 2005 : PRESSURE GAUGE & GAUGE ATTACHMENT

EN 837-1/1998 : BOURDON TUBE PRESSURE GAUGES - DIMENSIONS, METROLOGY, REQUIREMENTS AND TESTING

EN 837-2/1997 : SELECTION & INSTALLATION RECOMMENDATION FOR PRESSURE GAUGES

EN 837-3/1996 : DIAPHRAGM AND CAPSULE PRESSURE GAUGES - DIMENSIONS, METROLOGY, REQUIREMENTS AND TESTING

IS 3624/2004 : SPECIFICATION FOR PRESSURE AND VACUUM GAUGES

IS 11222/2005 : SPECIFICATION FOR DIAL, SCALES AND INDEXES FOR INDICATING ANALOGUE MEASURING INSTRUMENTS.

### FOR TEMPERATURE GAUGES:

ANSI/ASME B 40.200 – 2001 : THERMOMETERS - DIRECT READING AND REMOTE READING

EN 13190/2001 : DIAL THERMOMETERS

IS 13211/ 2001 : VAPOUR PRESSURE DIAL-TYPE THERMOMETERS -SPECIFICATION

### FOR DIAPHRAGM SEALS:

ANSI/ASME B 40.2 – 2005 : DIAPHRAGM SEALS

### FOR THERMOWELLS:

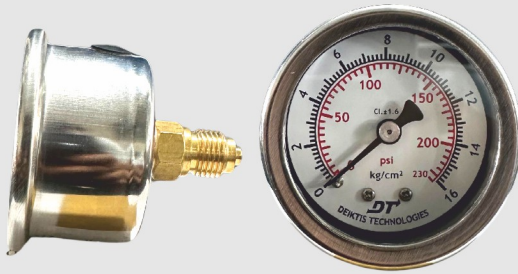
ASME PTC 19.3 TW - 2016 : THERMOWELLS : PERFORMANCE TEST CODE

### FOR RTD & THERMOCOUPLES:

BS EN 60751 – 2008 : INDUSTRIAL PLATINUM RESISTANCE THERMOMETER : THERMOMETER AND PLATINUM SENSORS

ANSI MC – 96.1 - 1982 : TEMPERATURE MEASUREMENT : THERMOCOUPLES

## PGUT Utility Pressure Gauge, Bourdon



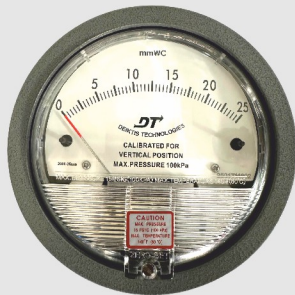
Dial size	1½", 2", 2½", 4", 6"
Accuracy	±2.5% of full scale for 1½", 2" ±1.6% of full scale for 2½", 4", 6"
Wetted parts	Copper Alloy
Enclosure	SS 304, Crimped bezel
Mounting	Bottom, Centre Back, Eccentric back
Mounting accessories	Back Flange, Front Flange, Panel mounting clamp
	Glycerin Filling, SS Tag Plate Restriction Screw, Refrigerant Scales Color band, Private Labelling

## PGUC Utility Pressure Gauge, Capsule Type



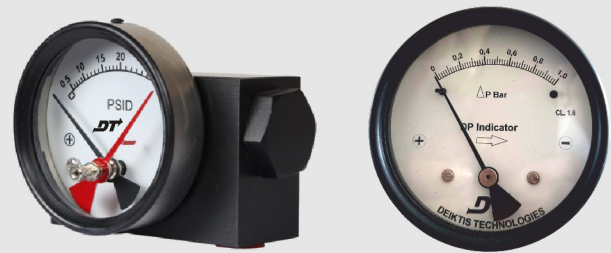
Dial size	1½", 2", 2½", 4", 6"
Accuracy	±1.6% for 2½", 4", 6"
Wetted parts	Copper Alloy
Enclosure	SS 304, Bayonet bezel
Mounting	Bottom, Centre Back, Eccentric back
Mounting accessories	Back Flange, Front Flange, Panel mounting clamp
Standard options	Glycerin filling, SS Tag Plate Restriction Screw

## DPGMG MAGNEHELIC DP GAUGE



Dial size	DN115/4"
Accuracy	±2% OF FS
Wetted parts	SS 316L
Enclosure	CAST Aluminum
Mounting	Centre Back
Process Connection	1/8" (F)

## DPGUT PISTON TYPE UTILITY DIFFERENTIAL PRESSURE GAUGE



Dial size	2½", 4", 4½", 6"
Accuracy	±2% OF FS (For Ascending Order)
Wetted parts	SS 316 / SS 316L
Enclosure	SS 304, Push-fit bezel
Mounting	Bottom, Back, In-Line
Mounting accessories	Front flange, 2" Stanchion
Standard options	SS Tag Plate, Oxygen Service Maximum Reading Pointer Color band, Private Labelling

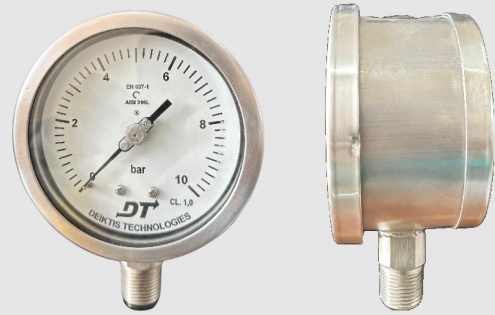
NOTE: Process connections can be 1/8", 1/4", 3/8", 1/2" in sizes with NPT, BSP, G, R, PT threads in Male or Female configuration.

## PGHP Process Pressure Gauge, Bourdon



Dial size	4", 6", 8", 10"
Accuracy	±1.0 of full scale
Wetted parts	SS 316L / MONEL / Hastelloy C
Enclosure	SS 304, Bayonet bezel, SS 316
Mounting	Bottom, Lower Back, Eccentric back
Mounting accessories	Back Flange, Front Flange, Panel mounting clamp, 2" Stanchion
Standard options	Glycerin Filling, SS Tag Plate Restriction Screw, Oxygen Service External Zero Adjustment Color bands, Private Labelling

## PGSF Solid Front Pressure Gauge, Bourdon



Dial size	4" & 6"
Accuracy	±1.0% of full scale / ±0.5% (optional)
Wetted parts	SS 316L / MONEL / Hastelloy C
Enclosure	SS 304, Bayonet bezel, SS 316
Mounting	Bottom, Lower Back
Mounting accessories	Back Flange, 2" Stanchion
Standard options	Glycerin Filling, Restriction Screw SS Tag Plate, External Zero Adjustment 150% Over Pressure Protection Color bands, Private Labelling

## PGPP Phenolic Case Pressure Gauge, Bourdon



Dial size	4½"
Accuracy	±0.5% of full scale / ±1.0% (optional)
Wetted parts	SS 316L / MONEL*
Enclosure	Polypropylene, Screwed bezel
Mounting	Bottom, Eccentric Back
Mounting accessories	Back Flange
Standard options	Glycerin filling, SS Tag Plate Restriction Screw, Oxygen Service Phenolic Resin case & ring Color bands, Private Labelling

## DPGHP Differential Pressure Gauge, Bellows Type, High Precision



Dial size	6"
Accuracy	±1.0% of full scale
Wetted parts	SS 316L
Enclosure	SS 304, Bayonet bezel
Mounting	Bottom
Mounting accessories	Back Flange, 2" Stanchion
Standard options	Glycerin Filling, SS Tag Plate, Max. Reading Pointer Electric contacts, Flow Measuring Scale Color band, Private Labelling

NOTE: Process connections can be 1/8", 1/4", 3/8", 1/2" in sizes with NPT, BSP, G, R, PT threads in Male or Female configuration.

## BMTG Standard Temperature Gauge, Bimetal



Dial size	2½", 4" & 6"
Accuracy	Class 1 / ±1.0% of full scale or as per EN13190
Sensor details	SS 316 Ø6 / Ø8 / Ø9.5 / Ø10 / Ø12 65mm up to 750mm
Enclosure	SS 304, Bayonet bezel, SS 316
Mounting	Bottom, Centre Back
Mounting accessories	Front Flange,
Standard options	SS Tag Plate, Color bands, Private Labelling

## BMTG Process Temperature Gauge, Bimetal



Dial size	3", 4", 4½" & 6"
Accuracy	Class 1 / ±1.0% of full scale or as per EN13190
Sensor details	SS 316 Ø6 / Ø8 / Ø9.5 / Ø10 / Ø12 65mm up to 750mm
Enclosure	SS 304, Bayonet bezel, SS 316
Mounting	Every Angle
Standard options	SS Tag Plate, Restriction Screw External Zero Adjustment Glycerine / Silicon Oil Filled Color bands, Private labelling

## GFTG Temperature Gauge, Gas-filled



Dial size	4" & 6"
Accuracy	±1.6% of full scale or as per EN13190
Sensor details	SS 316 Ø6 / Ø8 / Ø9.5 / Ø10 / Ø12 65mm up to 750mm
Remote mounting details	SS 316L 1000 mm up to 10000mm
Armour	SS 304, SS 316, PVC coated
Enclosure	SS 304, Bayonet bezel, SS 316
Mounting	Back Flange, Front Flange, Panel mounting clamp, 2" Stanchion

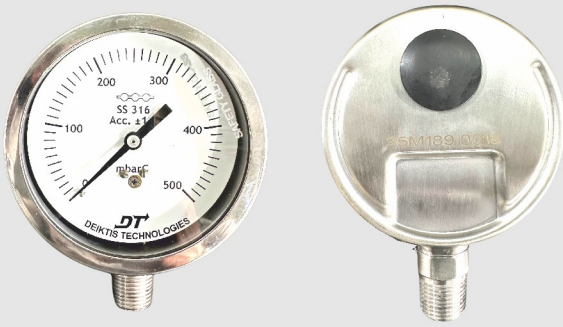
## PGMD Mud Gauge



Dial size	Nominal gauge size - 4" (100 mm)
Accuracy	±1% FSD
Sensing Element	SS 316L, Diaphragm
Dial type	Moving (Rotating), Aluminium, white background, black markings
Range	0 to 1000 Bar Max
Case	Full SS / MS
Option	Glycerine / Silicon filling
Process Connection	2" NPT (M/F) / Flanged

NOTE: Process connections can be 1/8", 1/4", 3/8", 1/2" in sizes with NPT, BSP, G, R, PT threads in Male or Female configuration.

## PGCP Process Pressure Gauge, Capsule



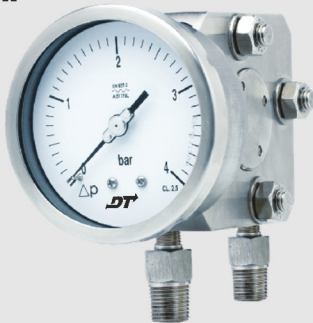
Dial size	2½", 4" & 6"
Accuracy	±1.6 of full scale
Wetted parts	SS 316 capsule + SS 316L socket
Enclosure	SS 304, Bayonet bezel, SS 316
Mounting	Bottom, Centre Back, Eccentric back
Mounting accessories	Back Flange, Front Flange, Panel mounting clamp, 2" Stanchion
Standard options	SS Tag Plate, Restriction Screw Internal Zero Adjustment Color bands, Private Labelling

## PGDF Process Pressure Gauge, Schaffer Diaphragm,



Dial size	4" & 6"
Accuracy	±1.0% of full scale / ±0.5% (optional)
Wetted parts	SS 316L / MONEL / Hastelloy C
Enclosure	SS 304, Bayonet bezel, SS 316
Mounting	Bottom
Mounting accessories	Back Flange, 2" Stanchion
Standard options	SS Tag Plate, Restriction Screw 150% Over Pressure Protection Color bands, Private labelling

## DPGHP Differential Pressure Gauge, Single Diaphragm High Precision



Dial size	4" & 6"
Accuracy	±2.5% of full scale
Wetted parts	SS 316 / SS 316L
Enclosure	SS 304, Bayonet bezel, SS 316
Mounting	Bottom, Back
Mounting accessories	Back Flange, Front Flange 2" Stanchion
Standard options	Glycerin Filling, SS Tag Plate, Max. Reading Pointer Electric contacts, Flow Measuring Scale Color band, Private Labelling

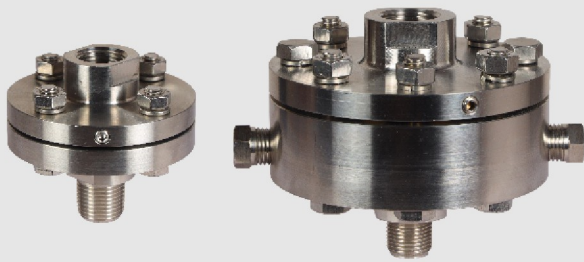
## DPGDD Differential Pressure Gauge, Double Diaphragm



Dial size	4" & 6"
Accuracy	±1.6% of full scale
Wetted parts	SS 316L / MONEL / Hastelloy C
Enclosure	SS 304, Bayonet bezel, SS 316
Mounting	Bottom, Center Back
Mounting accessories	Back Flange, Front Flange 2" Stanchion
Standard options	Glycerin Filling, SS Tag Plate, Max. Reading Pointer Electric contacts, Flow Measuring Scale Color band, Private Labelling

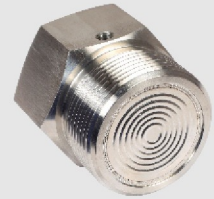
NOTE: Process connections can be 1/8", 1/4", 3/8", 1/2" in sizes with NPT, BSP, G, R, PT threads in Male or Female configuration.

## DSBT Diaphragm Seal Bottom Threaded (Screwed)



Diaphragm	SS 316L, Hastelloy C, Inconel, Monel Tantalum, Titanium, Super Duplex
Bottom Chamber	SS 316L, Hastelloy C, Inconel, Monel Titanium, PVC, Polypropylene
Top Chamber	SS 304, SS 316
Process Connection	½" NPT(M) / ½" BSP(M) / M20 x 1.5P ¾" NPT(M) / ½" NPT (F) / ¾" NPT (M)
Filling Liquid	Silicon oils, Syltherm, Halo-carbon Food grade, Fluorlube, etc.
Standard options	Material Test Certificate Wetted parts tested to NACE standards

## DSHT Diaphragm Seal Heavy Duty Threaded (Screwed)



**DSFF Diaphragm Seal Screwed Flush Type**

Diaphragm	SS 316L, Hastelloy C, Inconel, Monel Tantalum, Titanium, Super Duplex
Other wetted parts	SS 316L, Hastelloy C, Inconel Monel, Titanium
Non-wetted parts	SS 304, SS 316
Process Connection	½" NPT(M) / ½" BSP(M) / M20 x 1.5P ¾" NPT(M) / ½" NPT (F)
Filling Liquid	Silicon oils, Syltherm, Halo-carbon Food grade, Fluorlube, etc.
Standard options	Material Test Certificate Wetted parts tested to NACE standards

## DSDF Diaphragm Seal Direct Flange

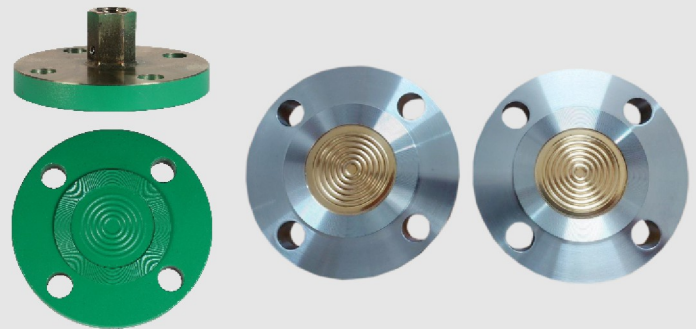


## DSIS Diaphragm Seal I Section Type



Diaphragm	SS 316L, Hastelloy C, Inconel, Monel Tantalum, Titanium, Super Duplex
Bottom Chamber	SS 316L, Hastelloy C, Inconel, Monel Titanium, PVC, Polypropylene
Process Connection	ANSI / API / ISO / EN flanged with Flat / Serrated / RTJ facing
Filling Liquid	Silicon oils, Syltherm, Halo-carbon Food grade, Fluorlube, etc.
Standard options	Material Test Certificate Wetted parts tested to NACE standards PFA lining / coating Gold / Silver plating on diaphragm & RF

## DSFL Diaphragm Seal Flush Flanged



Diaphragm	SS 316L, Hastelloy C, Inconel, Monel Tantalum, Titanium, Super Duplex
Bottom Chamber	SS 316L, Hastelloy C, Inconel, Monel Titanium, PVC, Polypropylene
Process Connection	ANSI / API / ISO / EN flanged with Flat / Serrated / RTJ facing
Filling Liquid	Silicon oils, Syltherm, Halo-carbon Food grade, Fluorlube, etc.
Standard options	Material Test Certificate Wetted parts tested to NACE standards PFA coating Gold / Silver plating on diaphragm & RF

NOTE: For other customization, please contact factory.

## DSSMS Diaphragm Seal SMS Union Type



Diaphragm	SS 316L, Hastelloy C, Inconel, Monel Tantalum, Titanium, Super Duplex
Bottom Chamber	SS 316L, Hastelloy C, Inconel, Monel Titanium, PVC, Polypropylene
Process Connection	ANSI / API / ISO / EN flanged with Flat / Serrated / RTJ facing
Filling Liquid	Silicon oils, Syltherm, Halo-carbon Food grade, Fluorolube, etc.
Standard options	Material Test Certificate Wetted parts tested to NACE standards PFA lining / coating Gold / Silver plating on diaphragm & RF

## DSTC - TRICLOVER Diaphragm Seal



Diaphragm	SS 316L, Hastelloy C, Inconel, Monel Tantalum, Titanium, Super Duplex
Bottom Chamber	SS 316L, Hastelloy C, Inconel, Monel Titanium, PVC, Polypropylene
Process Connection	ANSI / API / ISO / EN flanged with Flat / Serrated / RTJ facing
Filling Liquid	Silicon oils, Syltherm, Halo-carbon Food grade, Fluorolube, etc.
Standard options	Material Test Certificate Wetted parts tested to NACE standards PFA coating Gold / Silver plating on diaphragm & RF

## Overload Protector / Gauge Saver



Material of Construction	SS 304, SS 316, SS 316L, Monel Hastelloy C, Inconel
Connections	1/4", 3/8", 1/2", 3/4" with Male / Female in NPT / BSP / G / R / PT threads
Max Working Temp. / Pressure	250°C / 400 bar Consult factory for compatibility
Standard options	Material Test Certificate Wetted parts tested to NACE standards

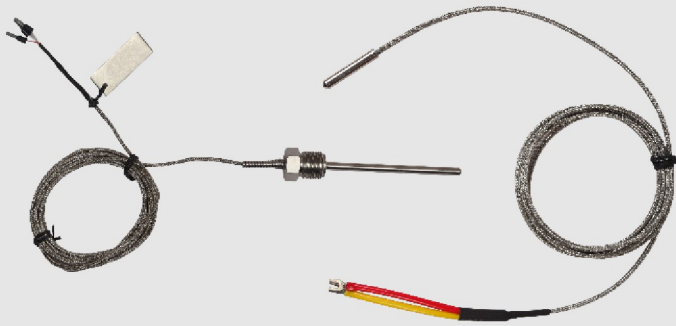
## Flushing Ring



Material of Construction	SS 304, SS 316, SS 316L, Monel Hastelloy C, Inconel
Connections	ANSI / API / ISO / EN flanged with Flat / Serrated / RTJ facing
Max Working Temp. / Pressure	250°C / 400 bar Consult factory for compatibility
Flushing Ports (Plugged)	Single / Double 1/4" NPT (F) / 1/2" NPT (F)
Standard options	Material Test Certificate Wetted parts tested to NACE standards

NOTE: For other customization, please contact factory.

## RTDTJ RTD / Thermocouple, Transition joint



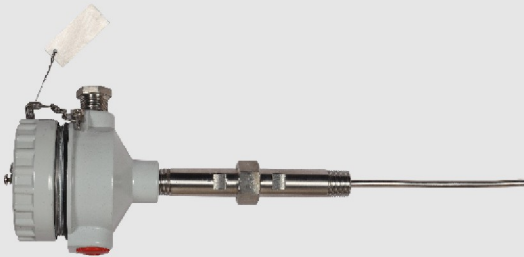
Element type	RTD:- Pt-100, Pt-500, Pt-1000 Thermocouple: K, J, N, E, T Noble Thermocouple: R, S, B
Accuracy	RTD:- Class A [IEC 751]/ DIN 43760 Thermocouple: Class 2 [ANSI MC 96.1] IEC- 584.2
Sensor details	SS 316 Ø3 / Ø6 / Ø8 / Ø9.5 / Ø10 / Ø12 25mm up to 25000mm
Termination	Extension & Compensating cables PTFE/PTFE or PTFE/PTFE/SS braided Others on request
Standard options	Head mount transmitter [4 - 20mA] Cable glands & Blind plugs

## RTDTH RTD / Thermocouple, With Enclosure



Element type	RTD:- Pt-100, Pt-500, Pt-1000 Thermocouple: K, J, N, E, T Noble Thermocouple: R, S, B
Accuracy	RTD:- Class A [IEC 751]/ DIN 43760 Thermocouple: Class 2 [ANSI MC 96.1] IEC- 584.2
Sensor details	SS 316 Ø3 / Ø6 / Ø8 / Ø9.5 / Ø10 / Ø12 25mm up to 25000mm
Termination	Weatherproof / Flameproof Enclosure Ex-proof / ATEX approved Enclosure Others on request
Standard options	Head mount transmitter [4 - 20mA] Cable glands & Blind plugs

## RTDTH RTD / Thermocouple, Nipple / NUN extension



Element type	RTD:- Pt-100, Pt-500, Pt-1000 Thermocouple: K, J, N, E, T Noble Thermocouple: R, S, B
Accuracy	RTD:- Class A [IEC 751]/ DIN 43760 Thermocouple: Class 2 [ANSI MC 96.1] IEC- 584.2
Sensor details	SS 316 Ø3 / Ø6 / Ø8 / Ø9.5 / Ø10 / Ø12 25mm up to 25000mm
Termination	Extension & Compensating cables PTFE/PTFE or PTFE/PTFE/SS braided Others on request
Standard options	Head mount transmitter [4 - 20mA] Cable glands & Blind plugs

## TWFL-FLANGED / TWTH - THREADED Thermowells



Type	Threaded / Flanged / Sanitary Van-stone / Strakes
Material	SS 304, SS 316, SS 316L, Monel Hastelloy C, Inconel, Super Duplex Titanium
Shank forms	Straight / Tapered Reduced Tip / Partial Taper
Shank type	Bar-stock / Pipe-fabricated
Standard options	Material Test Certificate Wetted parts tested to NACE standards PFA lining / coating, Tantalum sleeves Stellite / Tungsten carbide coating

NOTE: Process connections can be 1/8", 1/4", 3/8", 1/2" in sizes with NPT, BSP, G, R, PT threads in Male or Female configuration.

## NWPS: WEATHERPROOF PRESSURE SWITCH



Sensing Element	Diaphragm
Repeatability	±1% Full Scale
Equipment	Weatherproof
Sensing Element	AIS 316 SS / Monel / Hastelloy - C276
Chamber	AISI 316 SS / AISI 316L SS / Monel / Hastelloy C-276
Set Point	External Field Adjustable
Switch	1 SPDT / 2 SPDT Snap Action Micro switch
Switch Rating	15A,250 VAC / 2A,24 VDC (Standard)

## NFPS : FLAMEPROOF PRESSURE SWITCH



Sensing Element	Diaphragm
Repeatability	±1% Full Scale
Equipment	Ex d IIA/IIB/IIC T6 / CCOE & PESO (-10°C ≤ Ta ≤ +60°C) Zone 0, 1 & 2
Sensing Element	AIS 316 SS / Monel / Hastelloy - C276
Chamber	AISI 316 SS / AISI 316L SS / Monel / Hastelloy C-276
Set Point	External Field Adjustable
Switch	1 SPDT / 2 SPDT Snap Action Micro switch
Switch rating	15A,250 VAC / 2A,24 VDC (Standard)

## LGT : LEVEL GAUGE - TUBULAR



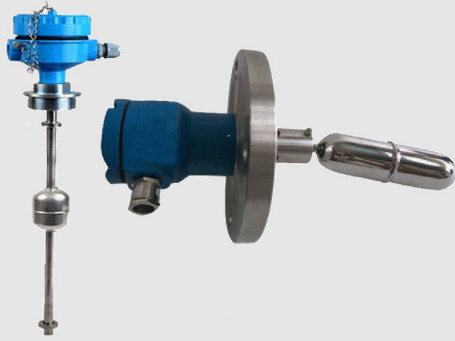
Type	Tubular-level Gauge
Max Operating Pressure	10 Bar
Max Operating Temperature	100°C
Orientation	Top+Bottom / Side+Side
Glass Tube Material	Acrylic Glass
Glass Protection Cover	Powder Coated Carbon Steel Channel
Process Connection	1" RF 150# as per ANSI B 16.5
Vent & Drain	1/2" NPT (F)

## LGM : MAGNETIC LEVEL INDICATOR



Type	Magnetic Transmission Level Indicator
Max Operating Pressure	1 0bar / 25 bar/ 40 bar / 60bar
Max Operating Temperature	120°C / 240°C / 300°C
Orientation	Top+Bottom / Side+Side
Float Material	SS316
Scale	Aluminum / Ss316 / SS304
Process Connection	1" RF 150# as per ANSI B 16.5
Vent & Drain	1/2" NPT (F)

## NLS : LEVEL SWITCHES



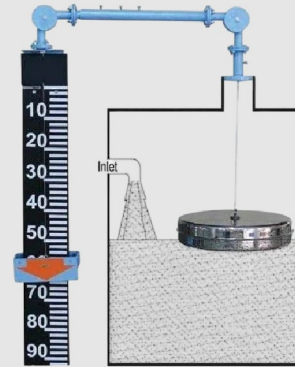
Type	Side Mounted
Max Operating Pressure	20 bar
Max Operating Temperature	Max 120°C
Connection	Threaded / Flanged
Enclosure	Pressure Die Cast Aluminum, Ip65
Float Material	316 SS
Process Connection Material	AISI 316 SS
Micro Switch	5A / 250 VAC

## Siphon / Cooling Element



Material of Construction	SS 304, SS 316, SS 316L, Inconel, CS
Type of Construction	Coil / Pig-tail, Trumpet / U - type for siphon Fin type with various length/ Digital Missing
Connections	1/4", 3/8", 1/2", 3/4" with Male / Female in NPT / BSP / G / R / PT threads ANSI / API / ISO / EN flanged with Flat / Serrated / RTJ facing
Max Working Temp. / Pressure	250°C / 400 bar Consult factory for compatibility
Standard options	Material Test Certificate Wetted parts tested to NACE standards

## LGFB : FLOAT & BOARD LEVEL GAUGE



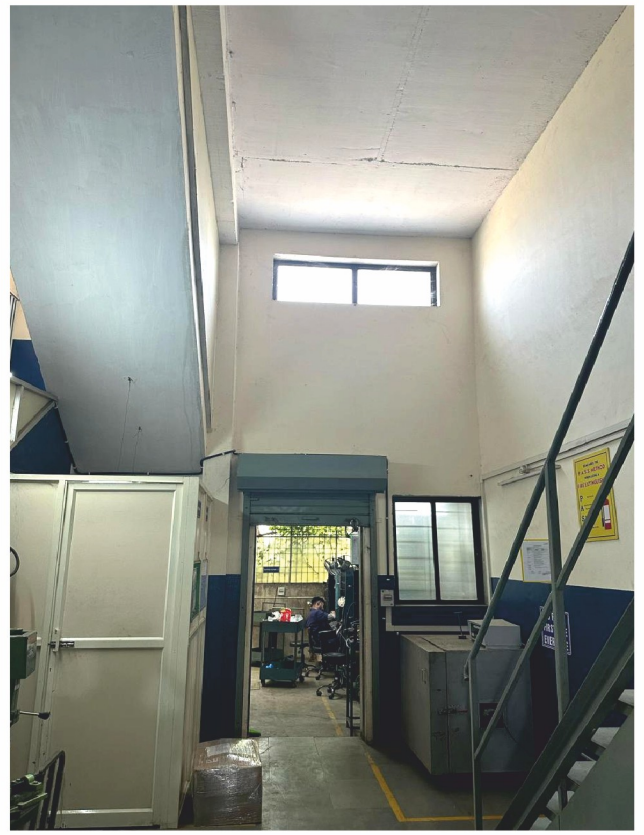
Float & Board	Level Gauge
Operating Pressure	Upto 5 Bar
Process Connection	Flanged
Least Coun	5 mm
Float Material	AIS1316 SS / Ø200 mm for up to 7.5 Meters AISI316 SS / Ø350 mm for up to 20 Meters
Measuring Ranges	3 meter.... 20 meter
Float / Guide Wire Ropes	SS 316 / SS 304

## Pulsation Dampener / Snubber



Material of Construction	SS 304, SS 316, SS 316L, Monel Hastelloy C, Inconel
Connections	1/4", 3/8", 1/2", 3/4" with Male / Female in NPT / BSP / G / R / PT threads
Max Working Temp. / Pressure	250°C / 400 bar Consult factory for compatibility
Standard options	Material Test Certificate Wetted parts tested to NACE standards







**PRESSURE** ⚙️ **TEMPERATURE**  
**GAUGES** ⚙️ **SENSORS** ⚙️ **SWITCHES**  
**PROTECTION & MOUNTING ACCESSORIES**

**REPRESENTED BY:**

***DEIKTIS TECHNOLOGIES PVT LTD***

**# 275/1/14 | No. 4 | Plot # 113 | Daman Ganga Industrial Park  
Karwad | Vapi | Valsad - 396195 | Gujarat | INDIA  
contact@deiktistech.com | +91-959-432-7109  
www.deiktistech.com**