

# PGUT

## UTILITY PRESSURE GAUGES

### MINIATURE TYPE



#### MAIN FEATURES

Rugged construction  
Stainless steel case  
Dry / liquid filled  
Private labeling  
Custom designed dials

#### SUGGESTED APPLICATIONS

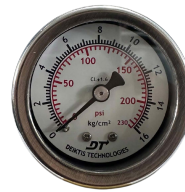
Hydraulic & Pneumatic pumps/compressors  
Water treatment plants  
Diesel Engines  
OEM applications

#### TEMPERATURE EFFECT

When temperature of the measuring system deviates from reference temperature (+20°C) : max error  $\pm 0.4\%$  / 10K of true scale value.

#### BASIC DESCRIPTION

Standard followed EN 837-1  
Sensing element : Bourdon Tube  
( $< 100$  bar : C - type ,  $> 100$  bar : Helical)  
Accuracy:  $\pm 1.6\%$  F.S.D.  
Ambient temperature:  $-40...+65^\circ\text{C}$   
Service temperature:  $120^\circ\text{C}$  max.  
Steady pressure: Up to FS value  
Fluctuating pressure: Up to 90% of FS value  
Over-pressure:  $1.3 \times \text{FS value} \leq 100$  bar  
 $1.15 \times \text{FS value} \geq 100$  bar Weld joints: Silver brazing



### MINIATURE UTILITY PRESSURE GAUGES

#### PRODUCT SPECIFICATION

##### STANDARD VERSION [CODE : PGUT]

Dial size : DN50 / DN63 / DN100  
Range :  $-1...0...400$  bar  
Mounting pattern : Direct, Bottom connection  
Process connection :  $1/4"$  NPT (M)  $1/4"$  BSP (M)  
Ingress protection : IP 65  
Execution : Dry but fill-able  
Case & Ring material : AISI 304 SS (Bayonet type)  
Bourdon tube & Shank : Copper Alloy  
Movement mechanism : Copper Alloy  
Dial : Aluminum, black graduation on white background  
Pointer : Fixed, aluminum, black powder coated  
Gaskets, Blow off disc & filling plug : Neoprene  
Window : Plexi glass

##### LIQUID FILLED VERSION (GLYCERIN) [CODE : G]

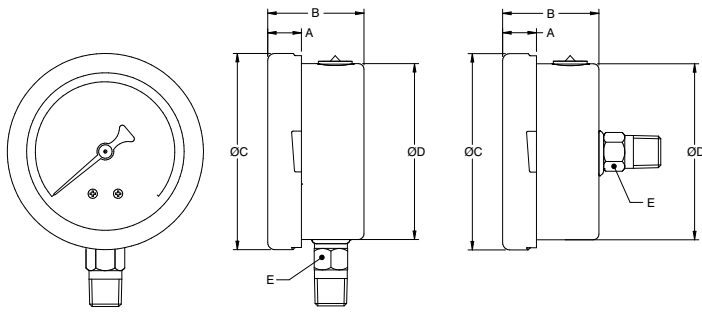
Ambient temperature:  $-20...+65^\circ\text{C}$   
Dampening liquid : Glycerin 99.7%

##### LIQUID FILLED VERSION (SILICON OIL) [CODE : S]

Ambient temperature:  $-40...+65^\circ\text{C}$   
Dampening liquid : Silicon oil

## DIMENSIONAL DRAWINGS

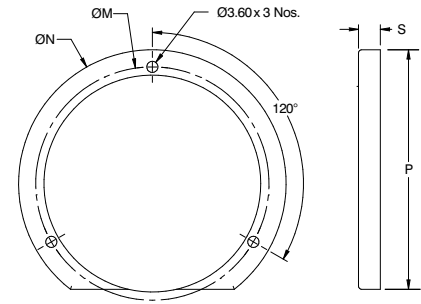
50mm / 63mm



**BD - Direct Bottom**

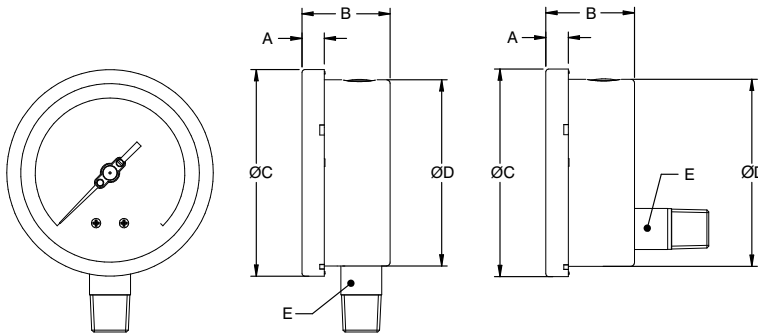
**BC - Center back**

## MOUNTING ACCESSORIES



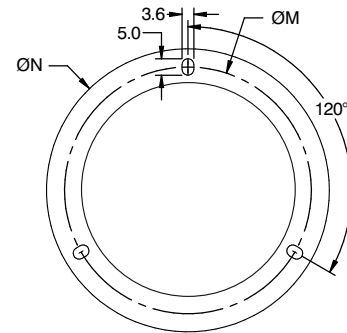
**BF - BACK FLANGE**

100mm



**BD - Direct Bottom**

**BC - Center back**



**FF - FRONT FLANGE**

NS	A	B	ØC	ØD	E
50	10	29	53	52	□ 14
63	12	29	63	62	□ 14
100	12	37	98.5	97	□ 17

All dimensions are in mm.

NS	P	S	ØN	ØM
63	77	7	86	75
100	128	7	134	118

All dimensions are in mm.

## MODEL CODING

MODEL	-	DIAL SIZE	MOUNTING	CONNECTION	CASE EXECUTION	/	RANGE	/
PGUT = Utility, Case SS 304, Copper PGUT = Utility, Case SS 316, Copper Alloy		50 = 50 mm 63 = 63 mm 100 = 100 mm	B = Direct Bottom C = Centre Back L = Lower Back	M1N = 1/8" NPT (M) M1B = 1/8" BSP (M) M2N = 1/4" NPT (M) M2B = 1/4" BSP (M) M4N = 1/2" NPT (M) MBN = 1/2" BSP (M) M2M = M12 X 1.0P M4M = M20 X 1.5P M3B = 3/8" BSP (M)	D = Dry but fill-able G = Glycerin filled S = Silicon oil filled		0...10 to 0...6000 psi or 0...0.6 to 0...400 bar or equivalent units	
<b>OTHER OPTIONS</b>								
BF = Back flange for bottom mounting FF = Front flange for lower back/center back mounting UC = "U" Clamp mounting for lower back mounting BT = Bayonet type case & ring		TS4 = Tag plate in SS 304 TS6 = Tag plates in SS 316 CD = Custom Dial Design / Private labeling		CC = 5 - point factory calibration certificate MTC = Material test certificate, 3.1 CCN = Calibration certificate with NABL certificate				

**ORDERING EXAMPLE** PGUT-100-BR-B-M4N-G-RANGE/A6.CC

## QUICK ORDER DETAILS / FEEDBACKS