

MAIN FEATURES

All SS measuring system
Socket-case, direct welded
Dry / liquid filled

SUGGESTED APPLICATIONS

Liquid & gaseous mediums
Corrosive environments
Oil & Gas applications
Chemical & Petrochemical
Food & Beverages
Nuclear power plants

TEMPERATURE EFFECT

When temperature of the measuring system deviates from reference temperature (+20°C) : max error $\pm 0.4\%$ / 10K of true scale value.



ECONOMY PRESSURE GAUGES

BASIC DESCRIPTION

Sensing element : Bourdon Tube
(< 100 bar : C - type , > 100 bar : Helical)
Accuracy: $\pm 1.6\%$ F.S.D.
Ambient temperature: $-40...+65^\circ\text{C}$
Service temperature: 300°C max.
Steady pressure: Up to FS value
Fluctuating pressure: Up to 90% of FS value
Over-pressure: $1.3 \times \text{FS value} \leq 100$ bar
: $1.15 \times \text{FS value} \geq 100$ bar
Weld joints: TIG argon arc welding

LIQUID FILLED VERSION (GLYCERIN) [CODE : G]

Ambient temperature: $-20...+65^\circ\text{C}$
Dampening liquid : Glycerin 99.7%

LIQUID FILLED VERSION (SILICON OIL) [CODE : S]

Ambient temperature: $-40...+65^\circ\text{C}$
Dampening liquid : Silicon oil

PRODUCT SPECIFICATION

STANDARD VERSION

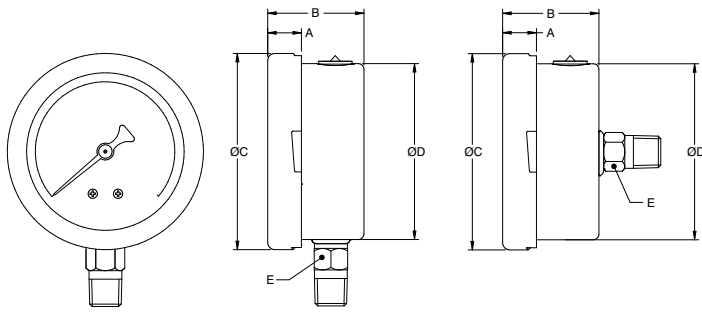
Dial size : 40mm / 50mm / 63mm / 100mm
Range : $-1...0...1,000$ bar
Mounting pattern : Direct, Bottom connection
Process connection : $1/4"$ NPT (M) / $1/4"$ BSP (M)
Ingress protection : IP 65
Case Execution : Dry but fill-able
Case & Ring material : SS 304 (Bayonet type)
Bourdon tube & Shank : SS 316
Shank welded directly to case for 50mm / 63 mm / 100mm
Shank screwed on back side of case for 40mm
Movement mechanism : SS 304
Dial : Aluminum, black graduation on white background
Pointer : Fixed, aluminum, black powder coated
Gaskets & filling plug : Neoprene
Window : Shatterproof safety glass

MONEL VERSION

Dial size : 63 mm / 100 mm
Bourdon tube & Shank : Monel 400
Shank welded directly to case for 63 mm / 100mm

DIMENSIONAL DRAWINGS

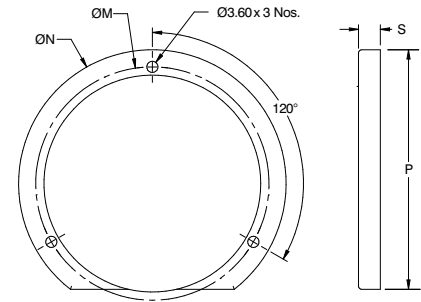
40mm / 50mm / 63mm



BD - Direct Bottom

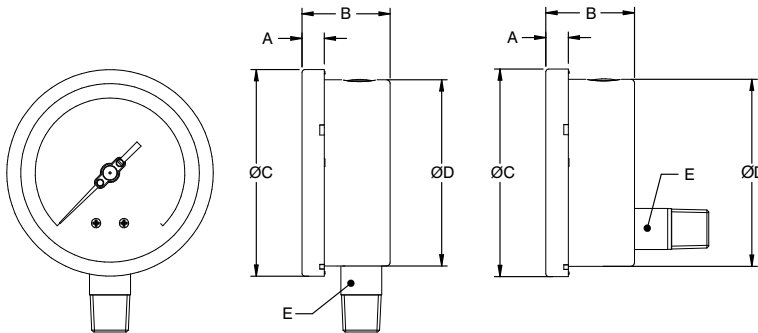
BC - Center back

MOUNTING ACCESSORIES



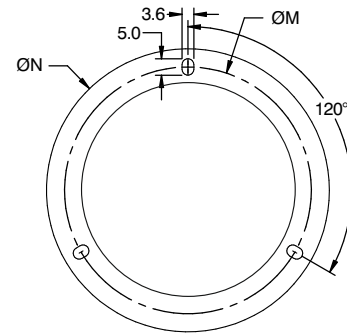
UC -Surface Plate

80mm / 100mm



BD - Direct Bottom

BC - Center back



FF - FRONT FLANGE

NS	A	B	ØC	ØD	E
40	10	26.5	44	42	□ 12
50	10	29	53	52	□ 14
63	12	29	63	62	□ 14
80	12	35	78	76	□ 14
100	12	37	98.5	97	□ 17

All dimensions are in mm.

NS	P	S	ØN	ØM
63	77	7	86	75
100	128	7	134	118

All dimensions are in mm.

MODEL CODING

MODEL	-	DIAL SIZE	MOUNTING	CONNECTION	CASE EXECUTION	RANGE
PGSS= ECONOMY PRESSURE GAUGE		40 = 40 mm 50 = 50 mm 63 = 63 mm 100 = 100 mm	B = Direct Bottom C = Centre Back L = Lower Back	M1N = 1/8" NPT (M) M1B = 1/8" BSP (M) M2N = 1/4" NPT (M) M2B = 1/4" BSP (M) M4N = 1/2" NPT (M) MBN = 1/2" BSP (M) M2M = M12 X 1.0P M4M = M20 X 1.5P M3B = 3/8" BSP (M)	D = Dry but fill-able G = Glycerin filled S = Silicon oil filled	0...10 to 0...15000 psi or 0...0.6 to 0...1000 bar or equivalent units

OTHER OPTIONS		
FF = Front flange with back mounting (3 Hole Panel) UC = Surface Plate TS4 = Tag plate in SS 304 TS6 = Tag plates in SS 316	CD = Custom Design Dial TD = Tag Marking on Dial RT = Rolling type Case & Ring BT = Bayonet Type Case & Ring EZ = External Zero Adjustment	MTC2.2 = Material test certificate, 2.2 MTC = Material test certificate, 3.1 CC = 5-point calibration certificate

ORDERING EXAMPLE PGSS-63-S16-B-M4N-SO4-D-RANGE-A6/CC.

QUICK ORDER DETAILS / FEEDBACKS