

PGSF

PROCESS PRESSURE GAUGES

SOLID FRONT FULL BLOW BACK TYPE



MAIN FEATURES

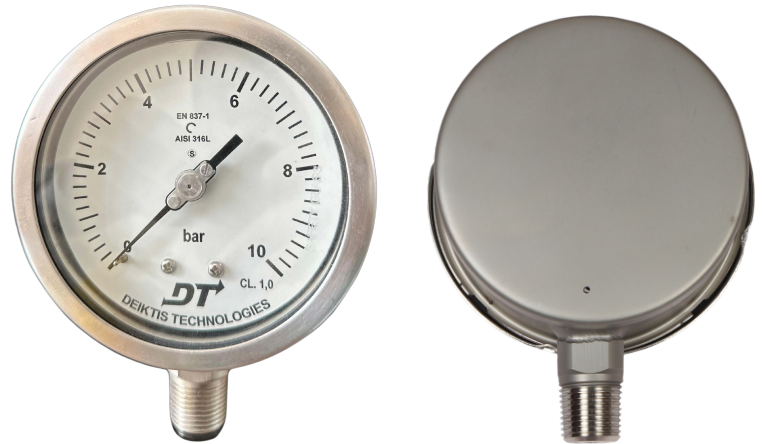
All SS measuring system
Socket-case, direct welded
Dry / liquid filled

SUGGESTED APPLICATIONS

Liquid & gaseous mediums
Corrosive environments
Oil & Gas applications
Chemical & Petrochemical
Food & Beverages
Nuclear power plants

TEMPERATURE EFFECT

When temperature of the measuring system deviates from reference temperature (+20°C) : max error $\pm 0.4\%$ / 10K of true scale value.



SOLID FRONT FULL BLOW BACK TYPE PROCESS PRESSURE GAUGES

BASIC DESCRIPTION

Sensing element : Bourdon Tube
(< 100 bar : C - type , > 100 bar : Helical)
Accuracy: $\pm 1.0\%$ F.S.D.
Ambient temperature: $-40...+65^\circ\text{C}$
Service temperature: 300°C max.
Steady pressure: Up to FS value
Fluctuating pressure: Up to 90% of FS value
Over-pressure: $1.3 \times \text{FS value} \leq 100$ bar
 : $1.15 \times \text{FS value} \geq 100$ bar
Weld joints: TIG argon arc welding

LIQUID FILLED VERSION (SILICON OIL) [CODE : S]

Ambient temperature: $-40...+65^\circ\text{C}$
Dampening liquid : Silicon oil

PRODUCT SPECIFICATION

STANDARD VERSION [CODE : PGSF]

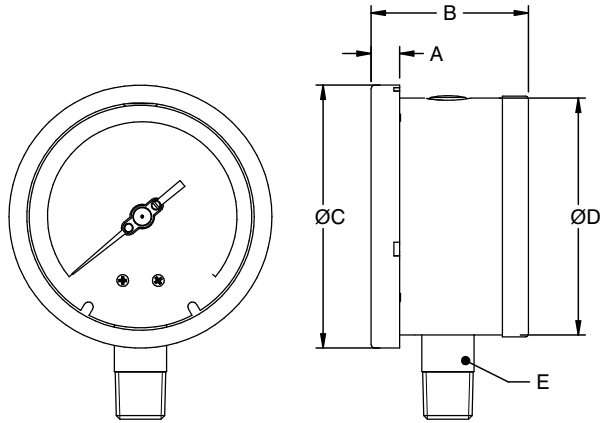
Dial size : 100mm / 150 mm
Range : $-1...0...1,600$ bar
Mounting pattern : Direct, Bottom connection
Process connection : $1/2"$ NPT (M) / $1/2"$ BSP (M)
Ingress protection : IP 67
Execution : Dry but fill-able/Dry/Glycerin Filled
Case, Ring & Blow-off disc material : SS316/SS304 (Bayonet type)
Bourdon tube & Shank : SS 316L (Shank welded directly to case).
Movement mechanism : SS316/SS304
Dial : Aluminum, black graduation on white background
Pointer : Micro-zero adjustable, aluminum, black powder coated
Gaskets & filling plug : Neoprene
Window : Shatterproof safety glass

LIQUID FILLED VERSION (GLYCERIN) [CODE : G]

Ambient temperature: $-20...+65^\circ\text{C}$
Dampening liquid : Glycerin 99.7%

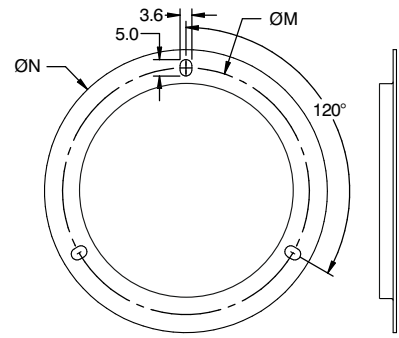
DIMENSIONAL DRAWINGS

100mm / 150 mm



NS	A	B	ØC	ØD	E
100	12	66.5	111	100	□22
150	15	68.5	161	149	□22

MOUNTING ACCESSORIES



BF - BACK FLANGE

NS	P	S	ØN	ØM
100	128	7	134	118
150	172	7	186	168

All dimensions are in mm.

MODEL CODING

MODEL	-	DIAL SIZE	MOUNTING	CONNECTION	CASE EXECUTION	/	RANGE	/
PGSF = Solid front, Case SS 304, Bourdon SS 316 PGSF = Solid front, Case SS 316, Bourdon SS 316L PGSF = Solid front, Case SS 304, Monel 400 PGSF = Solid front, Case SS 316, Monel 400		100 = 100 mm 115 = 115 mm 150 = 150 mm 250 = 250 mm	B = Direct Bottom L = Lower Back	M2N = ¼" NPT (M) M2B = ¼" BSP (M) M4N = ½" NPT (M) MBN = ½" BSP (M) M2M = M12 X 1.0P M4M = M20 X 1.5P M3B = ¾" BSP (M)	D = Dry but fill-able G = Glycerin filled S = Silicon oil filled Y = Dry		0..10 to 0..15000 psi or 0..0.6 to 0..1000 bar or equivalent units	

OTHER OPTIONS		
BF = Back flange for bottom mounting 2P = 2" Pipe mounting bracket for bottom mounting OR = Over range protection 1.5 of FSD OS = Overload stop RG = Receiver Gauge	TS4 = Tag plate in SS 304 TS6 = Tag plates in SS 316 CD = Custom Dial Design / Private labeling XG = SS 316 movement mechanism XP = Maximum Reading Pointer	CC = 5 - point factory calibration certificate NACE = Tested to NACE standards MTC = Material test certificate, 3.1 TO = Certificate of De-greasing VS = Vacuum stop

ORDERING EXAMPLE PGSF-100-S6L-B-M4N-S16-G/RANGE/A1.CD.CC

QUICK ORDER DETAILS / FEEDBACKS

.....

.....

.....

.....

.....