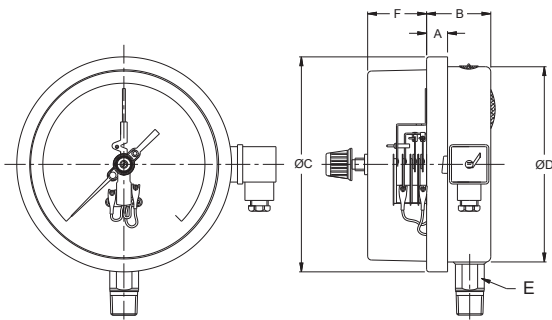


ELECTRIC CONTACTS DETAILS:

SWITCH TYPE	CONTACTS	ACTION	RATING
Normally closed (1NC)	Single	Break contact	230VAC/1A; 48VDC/0.5A
Normally open (1NO)	Single	Make contact	230VAC/1A; 48VDC/0.5A
Normally closed (2NC)	Double	Break contact	230VAC/1A; 48VDC/0.5A
Normally open (2NO)	Double	Make contact	230VAC/1A; 48VDC/0.5A
Normally closed + Normally open (1NC +1NO)	Double	Break contact + Make contact	230VAC/1A; 48VDC/0.5A
Normally open + Normally closed (1NO +1NC)	Double	Make contact + Brake contact	230VAC/1A; 48VDC/0.5A
SPDT	Single		230VAC/1A; 48VDC/0.5A

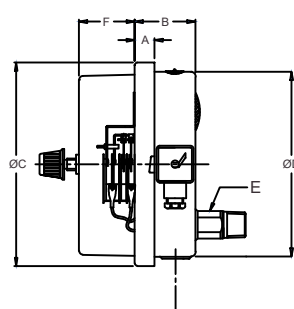
DIMENSIONAL DRAWINGS

100mm / 150mm



Direct Bottom

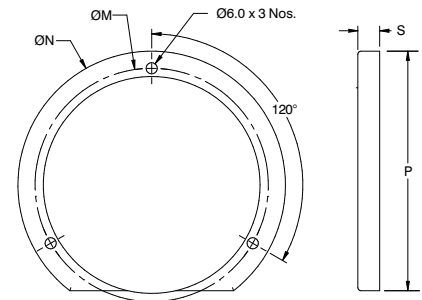
NS	A	B	ØC	ØD	E	F
100	12	48	111	100	22	44
150	15	48	161	149	22	44



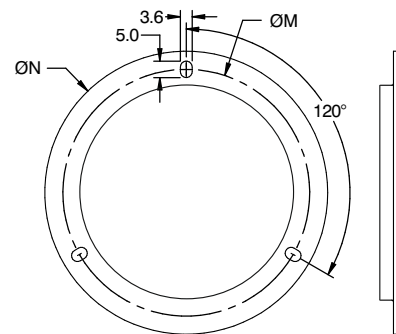
Lower Back

NS	P	S	ØN	ØM
100	128	7	134	118
150	172	7	186	168

MOUNTING ACCESSORIES



Surface Plate with U-Clamp



Front Flange

Rev 00

© 2022 DEIKTIS TECH All rights reserved. Technical specifications are expected to change without notice. Contact factory for any clarification.

MODEL CODING

MODEL	-	DIAL SIZE	MOUNTING	CONNECTION	CASE EXECUTION	/	RANGE	/
PGEC = OPEN FRONT PRECISION PROCESS PRESSURE GAUGE WITH CONTACT		100 = 100 mm 150 = 150 mm	B = Direct Bottom L = Lower Back	M2N = ¼" NPT (M) M2B = ¼" BSP (M) M4N = ½" NPT (M) MBN = ½" BSP (M) M2M = M12 X 1.0P M4M = M20 X 1.5P M3B = ¾" BSP (M)	D = Dry but fill-able G = Glycerin filled S = Silicon oil filled		0...10 to 0...15000 psi or 0...0,6 to 0...1000 bar or equivalent units	

OTHER OPTIONS		
FF = Front flange with back mounting (3 Hole Panel) UC = Surface Plate TS4 = Tag plate in SS 304 TS6 = Tag plates in SS 316	CD = Custom Design Dial TD = Tag Marking on Dial BT = Bayonet Type Case & Ring	MTC2.2 = Material test certificate, 2.2 MTC = Material test certificate, 3.1 CC = 5-point calibration certificate

ORDERING EXAMPLE PGEC-100.B.M4N.D/RANGE/CC.TS4

QUICK ORDER DETAILS / FEEDBACKS

.....

.....

.....

.....

.....