

MAIN FEATURES

Inert gas filled systems
Capillary & Case compensated
Dry / liquid filled

SUGGESTED APPLICATIONS

Liquid & gaseous mediums
Corrosive environments
Oil & Gas applications
Chemical & Petrochemical

BASIC DESCRIPTION

Standard followed EN 13190
Sensing element : Sensor bulb filled with inert gas
Accuracy: Class 1 as per EN 13190
Ambient temperature: -20...+60°C
Storage temperature: -40...+60°C (with liquid dampening) Over range limits: 110% of full scale
Weld joints: TIG argon arc welding

PRODUCT SPECIFICATION

STANDARD VERSION [CODE : GFTG]

Dial size : 100mm / 150 mm
Range : -50...0...+600°C
Mounting pattern : Direct Bottom Entry
Process connection : 1/2" NPT (M) / 1/2" BSP (M)
Process Connection type: Adjustable
Ingress protection : IP 65
Execution : Dry but fillable
Case & Ring : AISI 304 SS (Bayonet type)
Connection & Shank : AISI 316 SS (Stem welded directly to case)
Dial : Aluminum, black graduation on white background
Pointer : Micrometer adjustable, aluminum, black powder coated
Gaskets: Neoprene
Window : Shatterproof safety glass



INERT GAS FILLED PROCESS TEMPERATURE GAUGES

PRODUCT SPECIFICATION

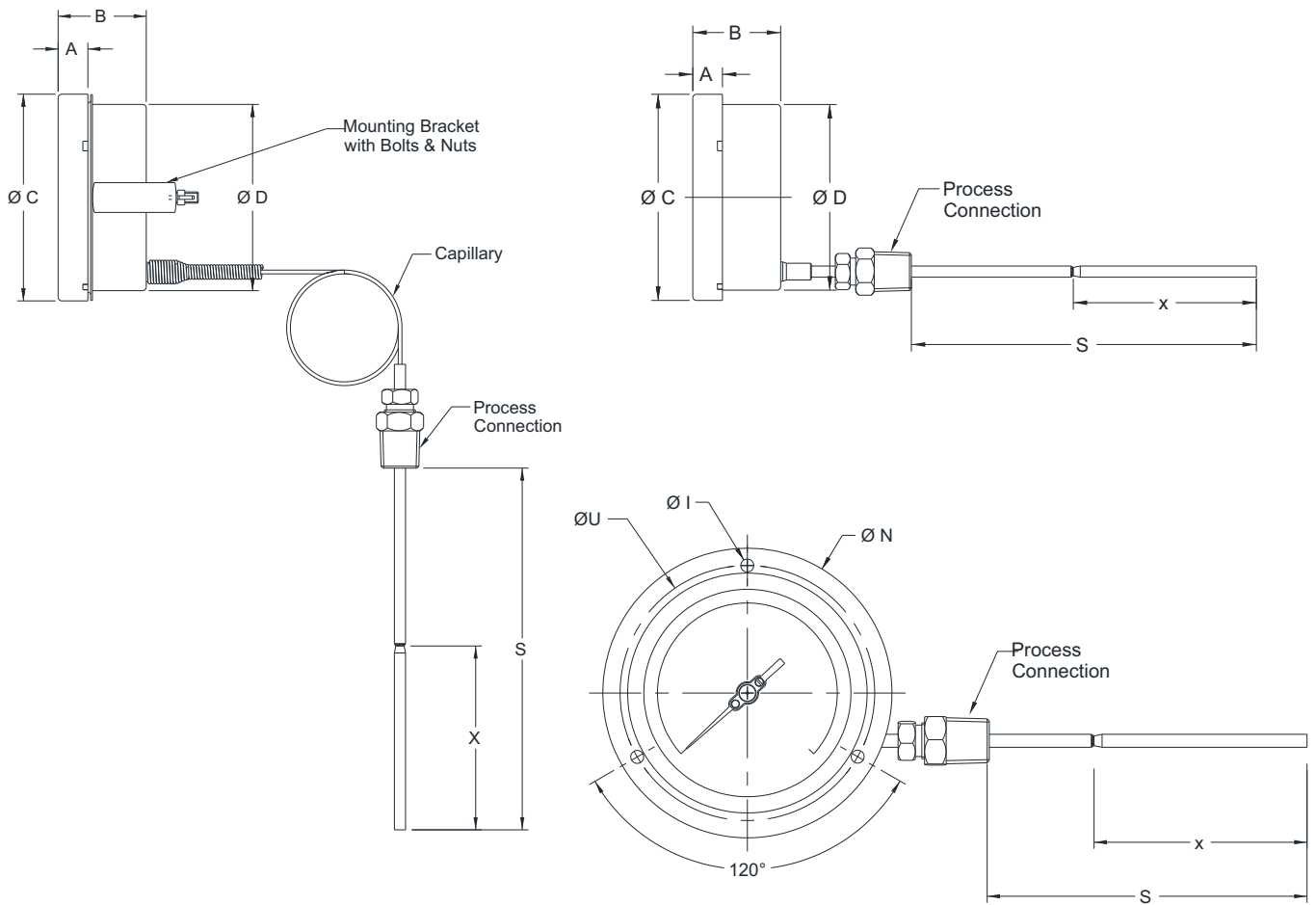
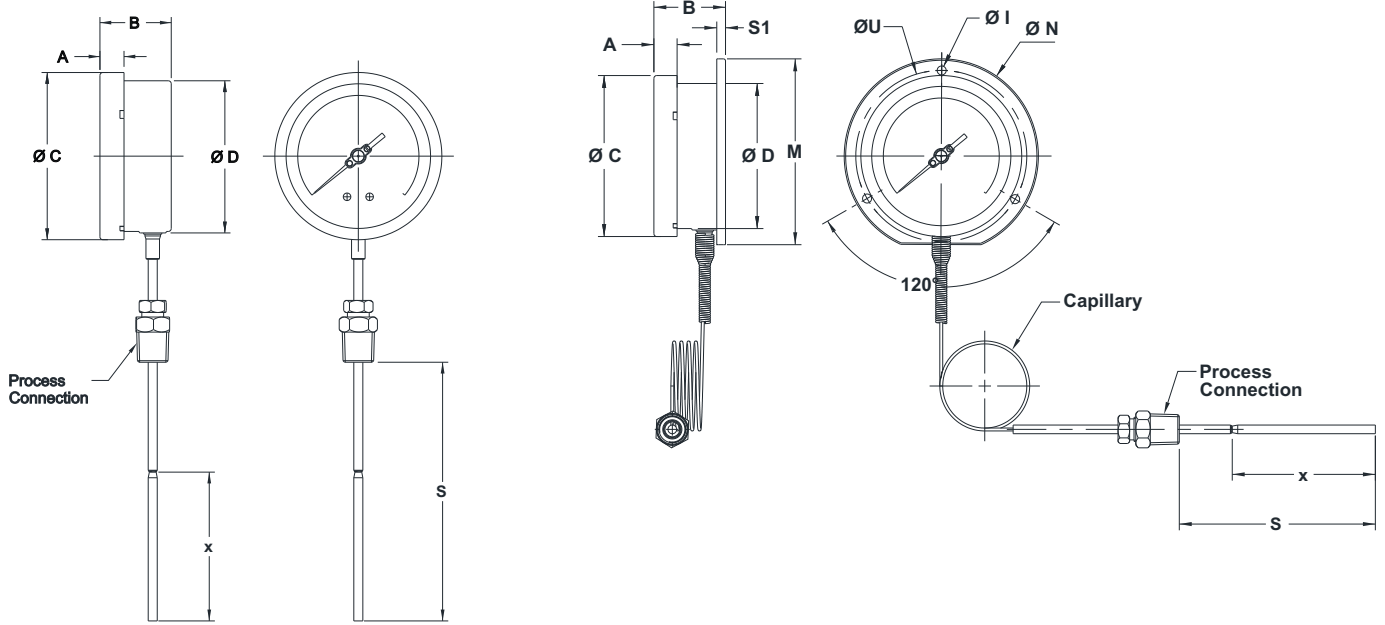
REMOTE VERSION [CODE : GFTG]

Dial size : 100mm / 150 mm
Range : -50...0...+600°C
Mounting pattern : Direct Bottom Entry with Surface Plate
Process connection : 1/2" NPT (M) / 1/2" BSP (M)
Process Connection type: Adjustable
Ingress protection : IP 65
Execution : Dry but fillable
Case & Ring : AISI 304 SS (Bayonet type)
Connection & Shank : AISI 316 SS (Stem welded directly to case)
Dial : Aluminum, black graduation on white background
Pointer : Micro-zero adjustable, aluminum, black powder coated
Capillary : SS 316L bore + SS 304 Armour
Capillary length : up to 10 Meters
Gaskets: Neoprene
Window : Shatterproof safety glass

LIQUID FILLED VERSION (SILICON OIL) [CODE : S]

Ambient temperature: -40...+65°C
Dampening liquid : Silicon oil

DIMENSIONAL DRAWINGS



All dimensions are in mm.

DN	A	B	ØC	ØD	ØI	ØN	M	S1	ØU	S	X
100	12	52	111	100	6	134	128	6	118	*	**
125	15	50	129	118.5	6	150	143.5	4	137	*	**
150	15	52	161	149	6	186	172.4	6	168	*	**
250	18.5	51.5	263	250	7	290	286.5	1.5	276	*	**

MODEL CODING

MODEL	-	GAUGE TYPE	DIAL SIZE	MOUNTING	CONNECTION	CONNECTION TYPE	CASE EXECUTION	/	RANGE	/
GFTG = Gas-filled, Case SS 304, Stem SS 316 GFTG = Gas-filled, Case SS 316, Stem SS 316		S = Standard R = Remote	100 = 100 mm 125 = 125 mm 150 = 150 mm 250 = 250 mm	B = Direct Bottom C = Centre Back L = Lower Back	M2N = ¼" NPT (M) M2B = ¼" BSP (M) M4N = ½" NPT (M) MBN = ½" BSP (M) M2M = M12 X 1.0P M4M = M20 X 1.5P M3B = ¾" BSP (M)	F = Fixed A = Adjustable W = Swivel	D = Dry but fill-able G = Glycerin filled S = Silicon Oil Y = Dry		-50...0...+600°C or -122...32...+1112°F or Other ranges on request	

STEM DIAMETER	STEM LENGTH	/	CAPILLARY	CAPILLARY LENGTH	/	OTHER OPTIONS
S6 = Ø6.0 mm / Ø6.35 mm S8 = Ø8.0 mm S9 = Ø9.5 mm / Ø10.0 mm S7 = Ø12.0 mm	70mm up to 3000 mm Other length on request		C1 = No Capillary C2 = SS 316L bore + SS 304 Armour C3 = SS 316L bore + SS 316 Armour C4 = SS 316L bore + SS 304 Armour + PVC	1 Mtr. up to 10 Mtr Other length on request		BF = Back flange for Direct Bottom mounting FF = Front flange for Lower Back mounting UC = "U" - clamp & retainer for Lower Back mounting TS4 = Tag plate in SS 304 TS6 = Tag plates in SS 316 CD = Custom Dial Design / Private labeling CC = 3 - point factory calibration certificate MTC = Material test certificate, 3,1

ORDERING EXAMPLE GFTG-S100.B.M4N.A.D/RANGE/S6.100/C1.CC.

QUICK ORDER DETAILS / FEEDBACKS
