

### MAIN FEATURES

Ideal for pressure transmitter  
 Laser welded diaphragm  
 One piece AISI 316 SS construction  
 Flush diaphragm

### SUGGESTED APPLICATIONS

Diaphragm seals are provided in the instruments like pressure gauges, switches, transmitters in order to isolate the sensing element from the main service due to its corrosive, viscous and sedimented nature and to avoid clogging and solidification

### BASIC DESCRIPTION

Storage Temperature : -40...+65°C  
 Service Temperature : 370°C Max.  
 Weld Joints : Laser welding on diaphragm

### MATERIAL OF CONSTRUCTION

Sensing Element : Diaphragm  
 Diaphragm : SS 316L / Monel / HC-276 /  
 INC-625 / Titanium / Tantalum

### FILLING LIQUIDS VS EMPERATURE RANGE

CODE	Fluid Name	Temperature Range
L2	Silicon Oil	-40°C to 250°C
L3	Food Grade Oil	-20°C to 200°C
L4	Hi-Temp Silicon Oil	-20°C to 450°C
L5	Fluorinated Oil	-10°C to 350°C



**DIAPHRAGM SEAL BOTTOM  
 THREADED (SCREWED)**

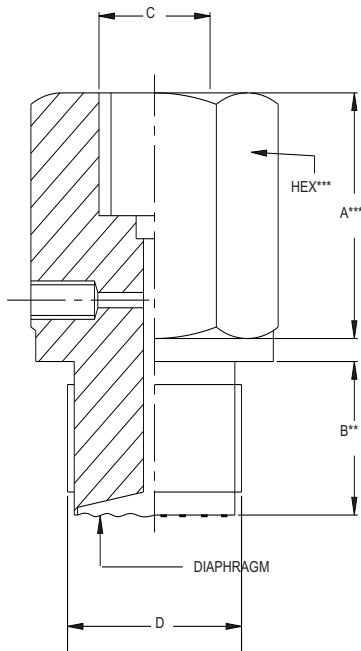
### SPECIFICATIONS

Range	:	Refer below table
Process temperature	:	-40°C to 200°C or as per fill fluid
Instrument connection	:	1/4" BSP (F)
Process connection	:	3/4" BSP (M)
Mounting	:	Direct (without capillary)
Diaphragm	:	AISI 316L SS
Body	:	AISI 316 SS
Diaphragm Filling fluid	:	Silicon Oil - DC 200

## PROCESS CONNECTION & RANGE SELECTION TABLE

Thread Size	½" BSP (M)	¾" BSP (M)	1" BSP (M)
Code	M4B	M3B	M1B
Thread Size	½" NPT (M)	¾" NPT (M)	1" NPT (M)
Code	M4N	M3N	M1N
Ranges (bar)			
4	X	X	X
6	X	X	X
10	X	X	X
16	X	X	✓
25	X	✓	✓
40	✓	✓	✓
60	✓	✓	✓
100	✓	✓	✓
160	✓	✓	✓
200	✓	✓	✓
250	✓	✓	✓
400	✓	✓	✓
600	✓	✓	✓

## DIMENSIONAL DRAWING



A***	B**	C	D*	HEX***	Approx. Wt.#
18	20	1/4" BSP(F)	3/4" BSP(M)	32	500.0

(# Weight in grams with box for Standard Model.) Notes :

- Drawings are not to scale
- All Dimensions are in mm.

## MODEL CODING

MODEL	DIAPHRAGM	INSTRUMENT CONNECTION	PROCESS CONNECTION	Diaphragm Filling Fluid
DSSF = DIAPHRAGM SEAL SCREWED (FLUSH TYPE)	S6L = SS 316L M40 = Monel 400 H76 = Hastelloy C-276 N62 = Inconel 625 TT6 = Titanium TAT = Tantalum	F4N = ½" NPT (F) F4B = ½" BSP (F)	M2N = ¼" NPT (M) M2B = ¼" BSP (M) M4N = ½" NPT (M) MBN = ½" BSP (M) M2M = M12 X 1.0P M4M = M20 X 1.5P M3B = ¾" BSP (M) F40 = 1.5" NPT (M)	L2 = Silicon Oil L3 = Food Grade Oil L4 = Hi-Temp Silicon Oil L5 = Fluorinated Oil

CAPILLARY	CAPILLARY LENGTH	OTHER OPTIONS		
C1 = No Capillary C2 = SS 316L bore + SS 304 Armour C3 = SS 316L bore + SS 316 Armour C4 = SS 316L bore + SS 304 Armour + PVC coating	1 Mtr. up to 5 Mtr. Other length on request	CB = PTFE coating on bottom chamber & diaphragm	CD= PTFE Coating on diaphragm	MTC2.2 =Material test certificate, 2.2 MTC3.1 = Material test certificate, 3.1 CC = 5-point calibration certificate

**ORDERING EXAMPLE**      DSSF-S6L-F4N-M4N-L2-C1.CB

## QUICK ORDER DETAILS / FEEDBACKS

.....

.....

.....

.....

.....