

DSPC DIAPHRAGM SEAL WAFER (PAN CAKE TYPE)



MAIN FEATURES

Laser welded diaphragm
Suitable for slurry & high viscous service
Easy to clean
Flush fitment in pipeline
Flushing ring, flange & diaphragm are available in various type of SS & Exotic materials

SUGGESTED APPLICATIONS

Diaphragm seals are provided in the instruments like pressure gauges, switches, transmitters in order to isolate the sensing element from the main service due to its corrosive, viscous and sedimented nature and to avoid clogging and solidification
These kind of seals are widely used in the viscous & corrosive services where flushing is required periodically & frequently

BASIC DESCRIPTION

Flange design : ANSI B16.5
Seal Range : -1 up to 160 bar
Storage temperature : -40...+65°C
Service temperature : 370°C max.
Weld joints : Laser welding for Diaphragm
TIG argon arc welding for other parts

FILLING LIQUIDS Vs TEMPERATURE RANGE

CODE	Fluid Name	Temperature Range
L2	Silicon Oil	-40°C to 250°C
L3	Food Grade Oil	-20°C to 200°C
L4	Hi-Temp Silicon Oil	-20°C to 450°C
L5	Fluorinated Oil	-10°C to 350°C

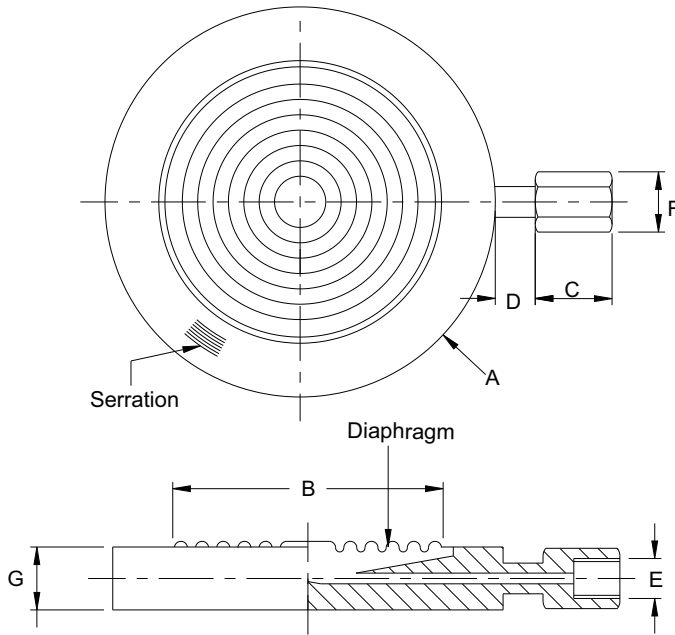


DIAPHRAGM SEAL WAFER (PAN CAKE TYPE)

PRODUCT SPECIFICATION

Range: 1 kg/cm² to 160 kg/cm²
Process temperature: -40°C to 200°C or as per fill fluid
Instrument connection: 1/4" NPT (F)
Process connection: Flange (As per ANSI/BS/DIN/JIS), Suitable for 2" & above
Flange finish: Finish 125-250 AARH
Range of selected instrument shall be suitable to flange pressure rating.
Diaphragm: ISI 316L SS
Pan Cake Body / Flange: 316 SS / 316L / Hastelloy C
Diaphragm Filling Fluid: Silicon Oil - DC 200

DIMENSIONAL DRAWINGS



A	B	C	D	E	F	G
**	**	20	*	1/4" NPT(F)	17 HEX.	22

- * To suit flange raised face
- ** 2" & above Flanges as per ANSI, BS, DIN, JIS etc.
- *** Diaphragm size as per pressure rang

Notes : • Drawings are not to scale.

• All Dimensions are in mm.

MODEL CODING

MODEL	DIAPHRAGM	/	INSTRUMENT CONNECTION	PROCESS CONNECTION	/	Diaphragm filling Fluid	/
DSPC = Diaphragm seal wafer (Pan Cake Type)	S6L = SS 316L M40 = Monel 400 H76 = Hastelloy C-276 N62 = Inconel 625 TT6 = Titanium TAT = Tantalum		F4N = 1/2" NPT (F) F4B = 1/2" BSP (F) F2N = 1/4" NPT (F) F2B = 1/4" BSP (F)	FX = Select from the table below.		L2 = Silicon Oil L3 = Food Grade Oil L4 = Hi-Temp Silicon Oil L5 = Fluorinated Oil	

OTHER OPTIONS	
MTC = Material Test Certificate, 3.1	CD = Coating on Diaphragm

FLANGE TABLE

ANSI B 16.5																	
Code	Size	Rating	Code	Size	Rating	Code	Size	Rating	Code	Size	Rating	Code	Size	Rating	Code	Size	Rating
F31	2"	150#	F32	2"	300#	F33	2"	600#	F34	2"	900#	F35	2"	1500#	F36	2"	2500#
F43	3"	150#	F44	3"	300#	F45	3"	600#	F46	3"	900#	F47	3"	1500#	F48	3"	2500#

ORDERING EXAMPLE DSPC-S6L-F2N-F01-L2.MTC

QUICK ORDER DETAILS / FEEDBACKS