

MAIN FEATURES

All SS 316 construction
 Deal for slurry / high viscous fluids
 Flange & diaphragm are available in various type of SS
 & exotic materials

SUGGESTED APPLICATIONS

Diaphragm seals are provided in the instruments like pressure gauges, switches, transmitters in order to isolate the sensing element from the main service due to its corrosive, viscous and sedimented nature and to avoid clogging and solidification.

These kind of seals are widely used in the viscous & corrosive services where flushing is required periodically & frequently.

BASIC DESCRIPTION

Flange design : ANSI B16.5
 Seal Range : -1 up to 250 bar
 Storage temperature : -40...+65°C
 Service temperature : 370°C max.
 Weld joints : Laser welding for Diaphragm
 TIG argon arc welding for other parts

FILLING LIQUIDS Vs TEMPERATURE RANGE

CODE	Fluid Name	Temperature Range
L2	Silicon Oil	-40°C to 250°C
L3	Food Grade Oil	-20°C to 200°C
L4	Hi-Temp Silicon Oil	-20°C to 450°C
L5	Fluorinated Oil	-10°C to 350°C

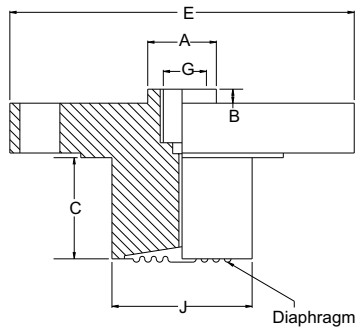


DIAPHRAGM SEAL (EXTENDED NECK TYPE)

PRODUCT SPECIFICATION

Range: 1 kg/cm² to 250 kg/cm²
 Process temperature: -40°C to 200°C or as per fill fluid
 Instrument connection: ½" BSP (F)
 Process connection: Flange (As per ANSI/BS/DIN/JIS),
 Suitable for 2" & above
 Flange finish: Finish 125-250 AARH
 Range of selected instrument shall be suitable to flange
 pressure rating.
 Diaphragm: AISI 316L SS
 Body / Flange: AISI 316 SS
 Diaphragm Filling Fluid: Silicon Oil - DC 200

DIMENSIONAL DRAWINGS



A	B	C	E	G	J
30	8	50*	**	1/2" BSP(F)	**

- * or as per customer requirements
- ** As per standard BLRF flange table ANSI, DIN, BS, JIS Etc.
- *** 40 / 53 / 63 / 70 mm (suitable to range as per flange pressure rating.)

Notes : • Drawings are not to scale.
• All Dimensions are in mm.

MODEL CODING

MODEL	DIAPHRAGM	INSTRUMENT CONNECTION	PROCESS CONNECTION	Diaphragm Filling Fluid
DSEN = Diaphragm seal (Extended Neck Type)	S6L = SS 316L M40 = Monel 400 H76 = Hastelloy C-276 N62 = Inconel 625 TT6 = Titanium TAT = Tantalum	F4N = 1/2" NPT (F) F4B = 1/2" BSP (F)	FXX = Select from the table below.	L2 = Silicon Oil L3 = Food Grade Oil L4 = Hi-Temp Silicon Oil L5 = Fluorinated Oil

OTHER OPTIONS
MTC = Material Test Certificate, 3.1 CD = Coating on Diaphragm

FLANGE TABLE

ANSI B 16.5																	
Code	Size	Rating	Code	Size	Rating	Code	Size	Rating	Code	Size	Rating	Code	Size	Rating	Code	Size	Rating
F01	1/2"	150#	F02	1/2"	300#	F03	1/2"	600#	F04	1/2"	900#	F05	1/2"	1500#	F06	1/2"	2500#
F07	3/4"	150#	F08	3/4"	300#	F09	3/4"	600#	F10	3/4"	900#	F11	3/4"	1500#	F12	3/4"	2500#
F13	1"	150#	F14	1"	300#	F15	1"	600#	F16	1"	900#	F17	1"	1500#	F18	1"	2500#
F25	1 1/2"	150#	F26	1 1/2"	300#	F27	1 1/2"	600#	F28	1 1/2"	900#	F29	1 1/2"	1500#	F30	1 1/2"	2500#
F31	2"	150#	F32	2"	300#	F33	2"	600#	F34	2"	900#	F35	2"	1500#	F36	2"	2500#
F43	3"	150#	F44	3"	300#	F45	3"	600#	F46	3"	900#	F47	3"	1500#	F48	3"	2500#

ORDERING EXAMPLE DSEN-S6L-F4N-F01-L2.MTC

QUICK ORDER DETAILS / FEEDBACKS