

# DSDF DIAPHRAGM SEAL DIRECT FLANGE (INSERT TYPE)



## MAIN FEATURES

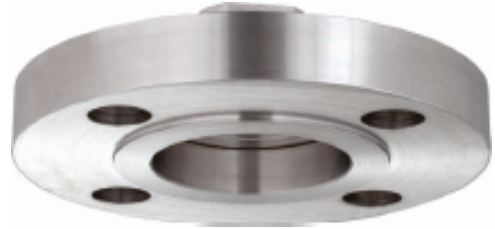
Laser welded diaphragm  
Optional flushing ring  
Optional exotic material

## SUGGESTED APPLICATIONS

Separation systems  
Isolation applications  
Viscous & corrosive media  
High-pressure applications  
High vibration application

## BASIC DESCRIPTION

Flange design : ANSI B16.5  
Seal Range : -1 up to 250 bar  
Storage temperature : -40...+65°C  
Service temperature : 370°C max.  
Weld joints : Laser welding for Diaphragm  
TIG argon arc welding for other parts



## DIAPHRAGM SEAL DIRECT FLANGE (INSERT TYPE)

## FILLING LIQUIDS Vs TEMPERATURE RANGE

CODE	Fluid Name	Temperature Range
L2	Silicon Oil	-40°C to 250°C
L3	Food Grade Oil	-20°C to 200°C
L4	Hi-Temp Silicon Oil	-20°C to 450°C
L5	Fluorinated Oil	-10°C to 350°C

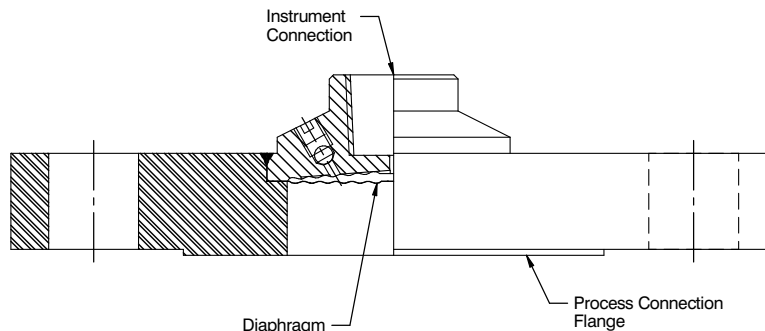
## PRODUCT SPECIFICATION

Seal type: Welded[Model: DSDF]  
Instrument Connection : ½" NPT(F) / ½" BSP (F)  
Diaphragm filling fluid: Silicon Oil [-40...250°C](Standard)  
Process Connection : 1½" 150# as per ANSI B16.5

## PROTECTION ON WETTED PARTS

PTFE coating on diaphragm [Code : CD]  
Material : PFA - 70 Micron thick [spray coated & oven cured] Service temperature : 300°C max.  
PTFE lining on bottom chamber[Code : LB]

## DIMENSIONAL DRAWINGS



### MODEL : DSDF

All dimensions are in mm.

## MODEL CODING

MODEL	-	TOP CHAMBER	DIAPHRAGM	BOTTOM CHAMBER	/	INSTRUMENT CONNECTION	PROCESS CONNECTION	/	Diaphragm Filling Fluid	/
DSDF = Diaphragm seal direct flange (Insert type)		S04 = SS 304 S16 = SS 316	S6L = SS 316L M40 = Monel 400 H76 = Hastelloy C-276 N62 = Inconel 625 TT6 = Titanium TAT = Tantalum	S16 = SS 316 S6L = SS 316L M40 = Monel 400 H76 = Hastelloy C-276 N62 = Inconel 625 TT6 = Titanium	/	F4N = 1/2" NPT (F) F4B = 1/2" BSP (F)	FX = Select from the table below.	/	L2 = Silicon Oil L3 = Food Grade Oil L4 = Hi-Temp Silicon Oil L5 = Fluorinated Oil	/

CAPILLARY	CAPILLARY LENGTH	/	OTHER OPTIONS
C1 = No Capillary C2 = SS 316L bore + SS 304 Armour C3 = SS 316L bore + SS 316 Armour C4 = SS 316L bore + SS 304 Armour + PVC coating	1 Mtr. up to 5 Mtr.  Other length on request	/	MTC = Material test certificate, 3.1  LB = PTFE lining on Bottom Chamber CD = Coating on Diaphragm

## FLANGE TABLE

ANSI B 16.5																	
Code	Size	Rating	Code	Size	Rating	Code	Size	Rating	Code	Size	Rating	Code	Size	Rating	Code	Size	Rating
F01	1/2"	150#	F02	1/2"	300#	F03	1/2"	600#	F04	1/2"	900#	F05	1/2"	1500#	F06	1/2"	2500#
F07	3/4"	150#	F08	3/4"	300#	F09	3/4"	600#	F10	3/4"	900#	F11	3/4"	1500#	F12	3/4"	2500#
F13	1"	150#	F14	1"	300#	F15	1"	600#	F16	1"	900#	F17	1"	1500#	F18	1"	2500#
F25	1 1/2"	150#	F26	1 1/2"	300#	F27	1 1/2"	600#	F28	1 1/2"	900#	F29	1 1/2"	1500#	F30	1 1/2"	2500#
F31	2"	150#	F32	2"	300#	F33	2"	600#	F34	2"	900#	F35	2"	1500#	F36	2"	2500#
F43	3"	150#	F44	3"	300#	F45	3"	600#	F46	3"	900#	F47	3"	1500#	F48	3"	2500#

**ORDERING EXAMPLE**      DSDF-S6L-S16-F4N-F33-L2.

## QUICK ORDER DETAILS / FEEDBACKS