

## MAIN FEATURES

3 different shank styles  
Solid bar-stock drilled design

## SUGGESTED APPLICATIONS

Oil & Gas applications  
Corrosive environments  
Power & Steel industries  
HVAC, Air filters & utilities  
On-shore/Off-shore application



## BAR-STOCK TYPE FLANGED THERMOWELLS

## STANDARD DESCRIPTION

Design : ASME PTC 19.3: 2010  
Well material : AISI 316 SS  
Instrument connection : 1/2" NPTF  
Process connection : 1 1/2" RF 150#  
Bore diameter : Ø7 mm  
Tip thickness : 5 mm  
Lagging extension : 50 mm  
Head diameter : Ø27 mm

## PRODUCT SPECIFICATION

### STRAIGHT SHANK VERSION [CODE : FST]

Shank style : Straight  
Root diameter : Ø16 mm  
Insertion ("U") length : 250 mm  
Total length : 300 mm

### TAPER SHANK VERSION [CODE : FTT]

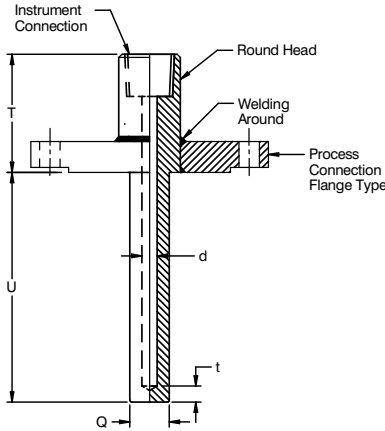
Shank style : Taper  
Root diameter : Ø27 mm  
Tip diameter : Ø18 mm  
Insertion ("U") length : 250 mm  
Total length : 300 mm

### STEP SHANK VERSION [CODE : FSTE]

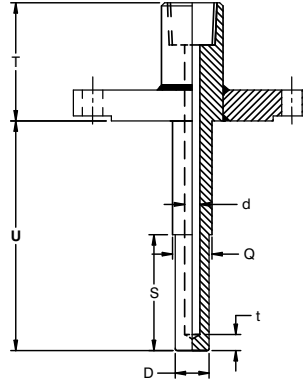
Shank style : Step  
Root diameter : Ø21 mm  
Tip diameter : Ø16 mm  
Insertion ("U") length : 250 mm  
Reduced tip length : 75 mm  
Total length : 300 mm

## DIMENSIONAL DRAWINGS

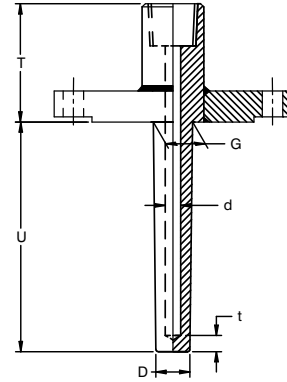
**Straight Thermowell**



**Step Thermowell**



**Taper Thermowell**



## MODEL CODING

MODEL	-	WELL MATERIAL	FLANGE MATERIAL	/	
FST = Straight shank FTT = Taper shank FSTE = Step shank		CST = ASTM A105 S04 = AISI 304 SS S10 = AISI 310 SS S16 = AISI 316 SS S6L = AISI 316L SS SSD = Duplex SS 2205 LF2 = ASTM A350 LF2	M40 = Alloy 400 N60 = Alloy 600 N62 = Alloy 625 N82 = Alloy 825 H76 = Hastelloy C-276 S46 = HRS 446 A20 = Alloy 20	CST = ASTM A105 S04 = AISI 304 SS S10 = AISI 310 SS S16 = AISI 316 SS S6L = AISI 316L SS SSD = Duplex SS 2205 LF2 = ASTM A350 LF2	M40 = Alloy 400 N60 = Alloy 600 N62 = Alloy 625 N82 = Alloy 825 H76 = Hastelloy C-276 S46 = HRS 446 A20 = Alloy 20

INSTRUMENT CONNECTION	PROCESS CONNECTION	/	HEAD DIAMETER	LAGGING EXTENSION	TIP THICKNESS	/
F4N = 1/2" NPTF F4B = 1/2" BSPF F4M = M20 X 1.5 mm F5N = 3/4" NPTF F5B = 3/4" BSPF	XXX = Follow as per the the flange table		H27 = 27 mm H30 = 30 mm H35 = 35 mm HXX = Customer specific	T50 = 50 mm TXX = Customer specific	t5 = 5 mm t6 = 6.35 mm t1 = 10 mm tx = Customer specific	

MAJOR DIAMETER	MINOR DIAMETER*	BORE DIAMETER	/	INSERTION LENGTH	STEP LENGTH	/
Q25 = 25 mm Q27 = 27 mm Q30 = 30 mm QXX = Customer specific or WFC calculated	D18 = 18 mm D22 = 22 mm D25 = 25 mm DXX = Customer specific or WFC calculated	d7 = 7 mm d9 = 9 mm d1 = 11 mm d4 = 14 mm dx = Customer specific or WFC calculated		UXX = Customer Specific or WFC calculated	SXX = Customer specific or WFC calculated	

OTHER OPTIONS		
(PC) Plug & chain in SS (EP) Electro polishing (MTC) Material test certificate 3.1 (DP) Dye penetration test (IGC) IGC test (HT) Hydro test certificate	(IBR) IBR certification (MTC 2.2) Material test certificate 2.2 (CCN) Tested to NACE standards (OS) Certification for Oxygen service (PT) Performance test certificate (HS) Certification for Hydrogen service	(WFC) WFC as per PTC 19.3TW:2010 (RW) Radiography for welding (RC) Radiography for bore concentricity (UT) Ultrasonic test

**ORDERING EXAMPLE** TW.FST.S16.S16-F4N-F35-H25-T50-t5-Q16-D16-d7

**QUICK ORDER DETAILS / FEEDBACKS**