

DPGUT

DIFFERENTIAL PRESSURE GAUGE

PISTON TYPE



MAIN FEATURES

Compact design
Migrated pressure chambers
Static pressure up to 200 bar

SUGGESTED APPLICATIONS

Filtration plants
Duct & room pressure
Pumps & Compressors
Water applications
Clean room applications

TEMPERATURE EFFECT

When temperature of the measuring system deviates from reference temperature (+20°C) : max error $\pm 0.4\%$ / 10K of true scale value.



PISTON TYPE DIFFERENTIAL PRESSURE GAUGE

BASIC DESCRIPTION

Sensing element : Piston

Accuracy: CL 2% (Ascending)

Ambient temperature: -40...+65°C

Service temperature: 80°C max.

Static pressure: 200 bar (Optional: 400 bar)

Over-pressure: No Overpressure

PRODUCT SPECIFICATION

STANDARD VERSION [CODE : DPGUT]

Dial size : 63mm/100mm/ 150mm

Range : 0.....70 bar

Mounting pattern : Direct, In-line Connection

Process connection : $\frac{1}{4}$ " NPT(F) X 2 NOS.

Ingress protection : IP 65

Execution : Dry

Case material : AISI SS 304 (Push-Fit Window)

Wetted parts: Teflon, Ceramic Magnet & SS Spring

Dial : Aluminum, black graduation on white background

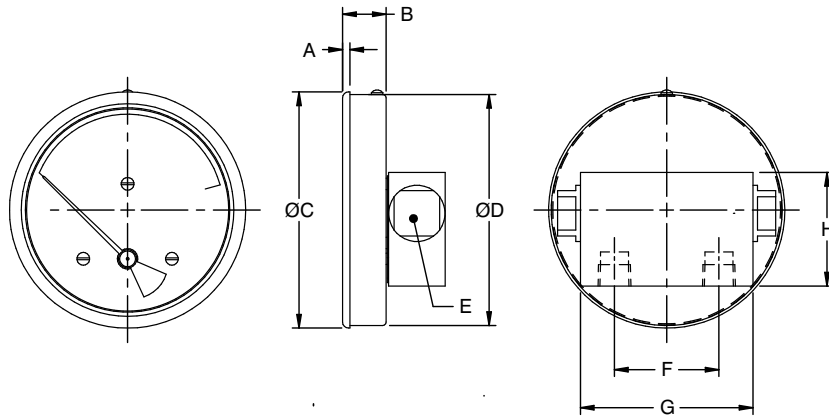
Pointer : Fix, aluminum black powder coated

Window: Plexi glass

DIMENSIONAL DRAWINGS

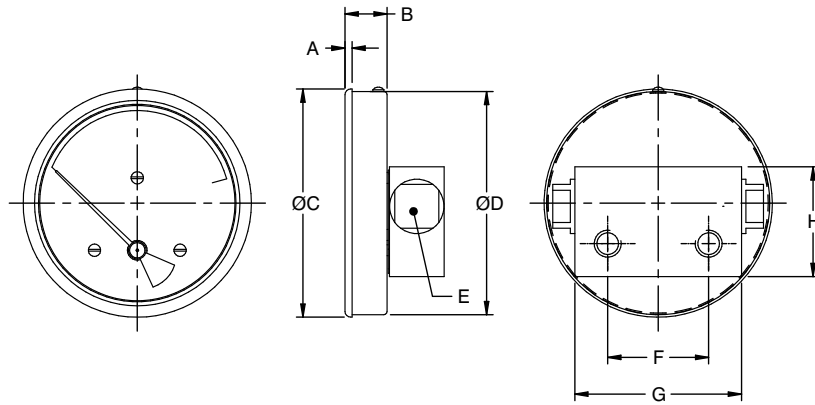
63mm/100mm/150mm

Direct Bottom Connection



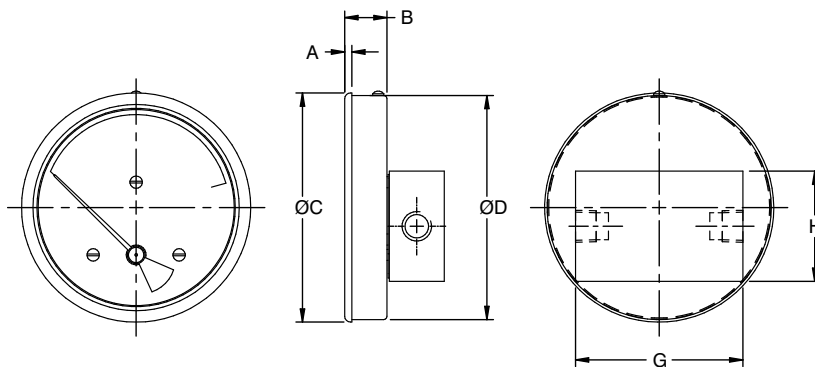
DN	A	B	C	D	E	F	G	H	Weight (grams)
63	3.2	19.5	66.5	62.5	20	46	76	50	430
100	3.2	19.5	104	101.5	20	46	76	50	460
150	3.2	19.5	155.5	151.5	20	46	76	50	560

Direct Back Connection



DN	A	B	C	D	E	F	G	H	Weight (grams)
63	3.2	19.5	66.5	62.5	20	46	76	50	400
100	3.2	19.5	104	101.5	20	46	76	50	450
150	3.2	19.5	155.5	151.5	20	46	76	50	540

In-line Connection



DN	A	B	C	D	G	H	Weight (grams)
63	3.2	19.5	66.5	62.5	76	50	410
100	3.2	19.5	104	101.5	76	50	460
150	3.2	19.5	155.5	151.5	76	50	550

NOTES

- Drawing not to scale. All dimensions are in mm.
- For other mounting details, Panel cut-out dimensions, kindly contact factory.

MODEL CODING

MODEL	-	DIAL SIZE	MOUNTING	CONNECTION	CASE EXECUTION	/	RANGE	/
DPGUT = Differential Pressure Gauge piston, Case SS 304		63 = 63mm	B = Direct Bottom	F2N = ¼" NPT (F)	G = Glycerin filled		0...70 bar	
DPGUT = Differential Pressure Gauge piston, Case SS 316		100 = 100mm 150 = 150mm	L = Direct Back I = In-line	F2B = ¼" BSP (F)	Y = Dry			

OTHER OPTIONS	
TS4 = Tag plate in SS 304	CC = 5 - point factory calibration certificate
TS6 = Tag plates in SS 316	NACE = Tested to NACE standards
CD = Custom Dial Design / Private labeling	

ORDERING EXAMPLE DPGUT-100.B.F2N.G/RANGE/A2/CC.TS4

QUICK ORDER DETAILS / FEEDBACKS

.....

.....

.....

.....

.....

Rev 00

© 2022 DEIKISTECH All rights reserved. Technical specification are expected to change without notice. Contact factory for any clarification.