

# DPGHP

## DIFFERENTIAL PRESSURE GAUGE

### SINGLE DIAPHRAGM TYPE



#### MAIN FEATURES

All SS measuring system  
Electric Contact Version  
Dry/Liquid filled

#### SUGGESTED APPLICATIONS

Liquid & gaseous mediums  
Corrosive environments  
Oil & Gas applications  
Chemical & Petrochemical  
Food & Beverages  
Nuclear power plants

#### TEMPERATURE EFFECT

When temperature of the measuring system deviates from reference temperature (+20°C) : max error  $\pm 0.4\%$  / 10K of true scale value.



### SINGLE DIAPHRAGM DIFFERENTIAL PRESSURE GAUGE

#### BASIC DESCRIPTION

Standard followed EN 837-3  
Design: EN 837-3  
Sensing Element: Diaphragm  
Accuracy: CL 2.5  
Ambient Temperature: -40...+65°C  
Service Temperature: 200°C Max.  
Static pressure: 2 bar upto 250mmWc,  
6 bar above 250 to 600mmWc,  
10 bar above 600 to 6000 mmWc,  
40 bar above 6000 mmWc to 4 bar,  
60 bar above 4 bar

#### PRODUCT SPECIFICATION

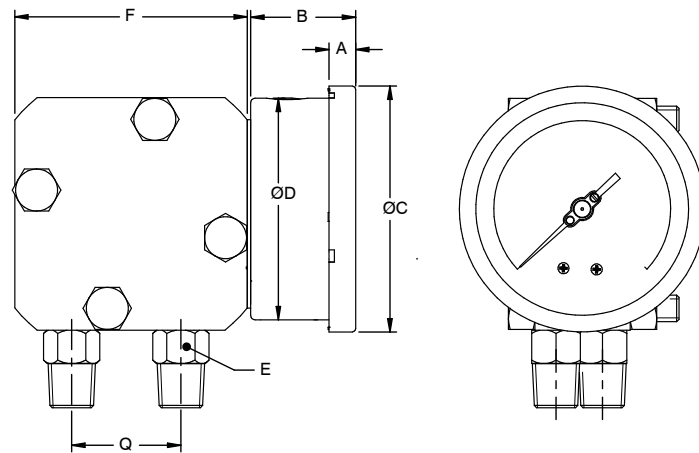
##### STANDARD VERSION [CODE : DPGHP]

Dial Size: 100mm/150mm  
Range: 25mbar...0...25 bar  
Mounting Pattern: Direct, Bottom Connection  
Process Connection :  $\frac{1}{2}$ " NPT (M) X 2 NOS.  
Ingress protection : IP 65  
Execution : Dry  
Case & Ring Material : AISI SS 304 (Bayonet Type)  
Chamber : AISI SS 304  
Diaphragm : AISI SS316L  
Movement Mechanism : AISI SS 304  
Dial: Aluminium, black graduation on white background  
Pointer: Micro-zero adjustable, aluminium, black powder coated  
Gasket & Vent Plug : Neoprene

## DIMENSIONAL DRAWINGS

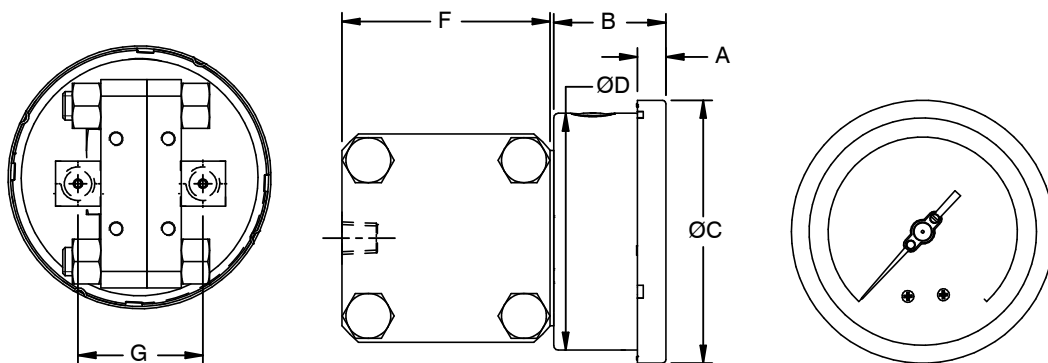
100mm / 150mm

### Direct Bottom Connection



DN	A	B	ØC	ØD	E	F	Q	Weight (gram)
100	12	48	111	100	A/F-22	SQ.105	49	4113
125	15	48	129	118.5	A/F-22	SQ.105	49	4301
150	15	48	161	149	A/F-22	SQ.105	49	4507

### Direct Back Connection



DN	A	B	ØC	ØD	F	Q	Weight (gram)
100	12	48	111	100	SQ.88	54	2857
150	15	48	161	149	SQ.88	54	3251

#### NOTES

1. Drawing not to scale. All dimensions are in mm.
2. For other mounting details, Panel cut-out dimensions, kindly contact factory.

## MODEL CODING

MODEL	-	DIAL SIZE	MOUNTING	CONNECTION	CASE EXECUTION	/	RANGE	/
DPGHP = Differential pressure gauge single diaphragm, Case SS 304, Diaphragm SS 316L DPGHP = Differential pressure gauge single diaphragm, Case SS 304, Diaphragm SS 316		100 = 100mm 150 = 150mm	B = Direct Bottom C = Center Back	M4N = 1/2" NPT (M) MBN = 1/2" BSP (M) M4M = M20 X 1.5P X 2 NOS EACH CONNECTION	D = Dry but fillable G = Glycerin filled S = Silicon Oil Y = Dry		25mbar...0...25bar or equivalent units	

OTHER OPTIONS	
TS4 = Tag plate in SS 304	CC = 5 - point factory calibration certificate
TS6 = Tag plates in SS 316	NACE = Tested to NACE standards
CD = Custom Dial Design / Private labeling	MTC = Material test certificate, 3.1
XG = SS 316 movement mechanism	

**ORDERING EXAMPLE**      DPGHP-100.B.M4N.D/RANGE/A2.5/CC.TS4

## QUICK ORDER DETAILS / FEEDBACKS

.....

.....

.....

.....

.....

.....

Rev 00

© 2022 DEIKTISTECH All rights reserved. Technical specification are expected to change without notice. Contact factory for any clarification.