

132B / 142B / 134B / 144B PROCESS PRESSURE GAUGES MINIATURE TYPE



MAIN FEATURES

All SS measuring system
Socket-case, direct welded
Dry / liquid filled

SUGGESTED APPLICATIONS

Liquid & gaseous mediums
Corrosive environments
Oil & Gas applications
Chemical & Petrochemical
Food & Beverages
Nuclear power plants

TEMPERATURE EFFECT

When temperature of the measuring system deviates from reference temperature (+20°C) : max error $\pm 0.4\%$ / 10K of true scale value.



MINIATURE PROCESS PRESSURE GAUGES

BASIC DESCRIPTION

Sensing element : Bourdon Tube
(< 100 bar : C - type , > 100 bar : Helical)
Accuracy: $\pm 1.0\%$ F.S.D.
Ambient temperature: $-40...+65^\circ\text{C}$
Service temperature: 300°C max.
Steady pressure: Up to FS value
Fluctuating pressure: Up to 90% of FS value
Over-pressure: $1.3 \times \text{FS value} \leq 100$ bar
: $1.15 \times \text{FS value} \geq 100$ bar
Weld joints: TIG argon arc welding

LIQUID FILLED VERSION (GLYCERIN) [CODE : G]

Ambient temperature: $-20...+65^\circ\text{C}$
Dampening liquid : Glycerin 99.7%

LIQUID FILLED VERSION (SILICON OIL) [CODE : S]

Ambient temperature: $-40...+65^\circ\text{C}$
Dampening liquid : Silicon oil

PRODUCT SPECIFICATION

STANDARD VERSION [CODE : 132B]

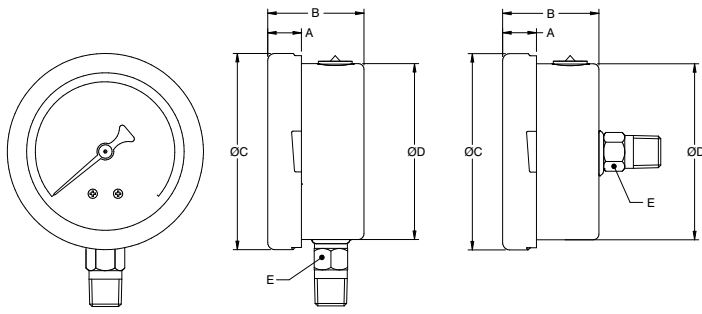
Dial size : 40mm / 50mm / 63mm / 100mm
Range : $-1...0...1,000$ bar
Mounting pattern : Direct, Bottom connection
Process connection : $1/4"$ NPT (M) / $1/4"$ BSP (M)
Ingress protection : IP 67
Case Execution : Dry but fill-able
Case & Ring material : SS 304 (Bayonet type)
Bourdon tube & Shank : SS 316
Shank welded directly to case for 50mm / 63 mm / 100mm
Shank screwed on back side of case for 40mm
Movement mechanism : SS 304
Dial : Aluminum, black graduation on white background
Pointer : Fixed, aluminum, black powder coated
Gaskets & filling plug : Neoprene
Window : Shatterproof safety glass

MONEL VERSION [CODE : 134B]

Dial size : 63 mm / 100 mm
Bourdon tube & Shank : Monel 400
Shank welded directly to case for 63 mm / 100mm

DIMENSIONAL DRAWINGS

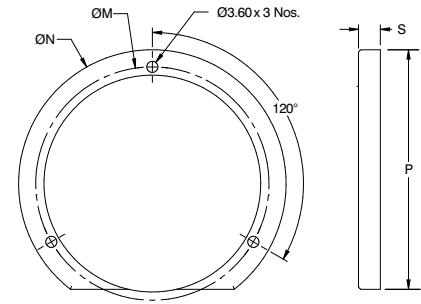
40mm / 50mm / 63mm



BD - Direct Bottom

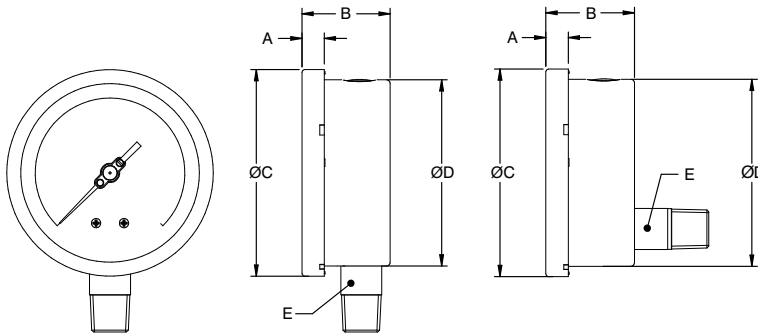
BC - Center back

MOUNTING ACCESSORIES



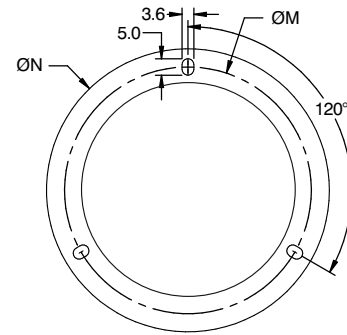
BF - BACK FLANGE

80mm / 100mm



BD - Direct Bottom

BC - Center back



FF - FRONT FLANGE

NS	A	B	ØC	ØD	E
40	10	26.5	44	42	□ 12
50	10	29	53	52	□ 14
63	12	29	63	62	□ 14
80	12	35	78	76	□ 14
100	12	37	98.5	97	□ 17

All dimensions are in mm.

NS	P	S	ØN	ØM
63	77	7	86	75
100	128	7	134	118

All dimensions are in mm.

MODEL CODING

MODEL	-	DIAL SIZE	MOUNTING	CONNECTION	CASE EXECUTION	/	RANGE	/
132B = Open front, Case SS 304, Bourdon SS 316 142B = Open front, Case SS 316, Bourdon SS 316 134B = Open front, Case SS 304, Monel 400 144B = Open front, Case SS 316, Monel 400		15 = 40 mm 20 = 50 mm 25 = 63 mm 03 = 80 mm 04 = 100 mm	B = Direct Bottom C = Centre Back L = Lower Back	M1N = 1/8" NPT (M) M1B = 1/8" BSP (M) M2N = 1/4" NPT (M) M2B = 1/4" BSP (M) M4N = 1/2" NPT (M) MBN = 1/2" BSP (M) M2M = M12 X 1.0P M4M = M20 X 1.5P M3B = 3/8" BSP (M)	D = Dry but fill-able G = Glycerin filled S = Silicon oil filled		0...10 to 0...15000 psi or 0...0.6 to 0...1000 bar or equivalent units	

OTHER OPTIONS

BF = Back flange for bottom mounting FF = Front flange for lower back/center back mounting UC = "U" Clamp mounting for lower back mounting XA = Tag plate in SS 304 XB = Tag plates in SS 316	XD = Custom Dial Design / Private labeling XP = Maximum Reading Pointer OR = Over range protection 1.5 of FSD OS = Overload stop RG = Receiver Gauge	TA = 5 - point factory calibration certificate TC = Material test certificate, 3.1 TO = Certificate of De-greasing VS = Vacuum stop
---	--	--

ORDERING EXAMPLE 132B-25.B.M2N.G/0-100psi/TA

QUICK ORDER DETAILS / FEEDBACKS