

# 131C / 232C

## CAPSULE PRESSURE GAUGES

### BRASS / STAINLESS STEEL WETTED PARTS



#### MAIN FEATURES

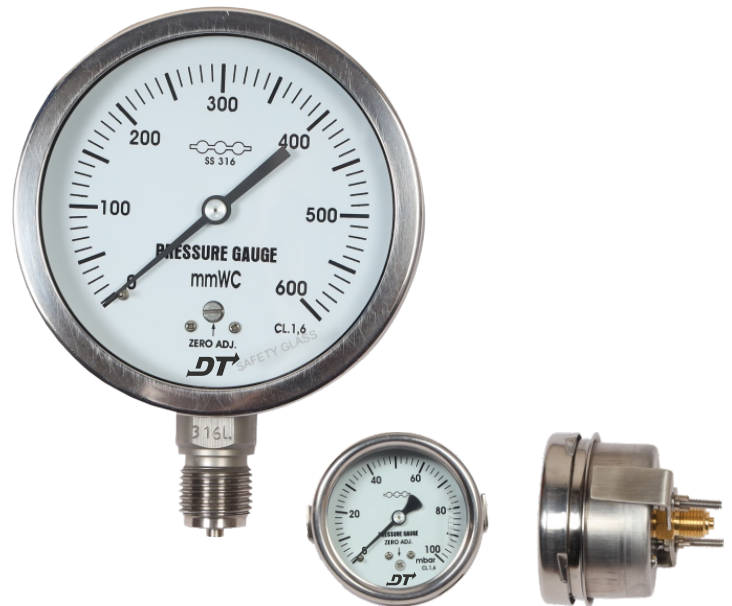
Socket-case, direct welded  
Threaded / Flanged connection  
Dry / liquid filled

#### SUGGESTED APPLICATIONS

Liquid & gaseous mediums  
Corrosive environments  
Oil & Gas applications  
Chemical & Petrochemical  
Food & Beverages  
Clean-air applications

#### TEMPERATURE EFFECT

When temperature of the measuring system deviates from reference temperature (+20°C) : max error  $\pm 0.4\%$  / 10K of true scale value.



### BRASS / STAINLESS STEEL CAPSULE PRESSURE GAUGES

#### BASIC DESCRIPTION

Design : EN 837-3  
Sensing element : Capsule  
Accuracy:  $\pm 1.6\%$  of full scale  
Service temperature : 150°C max. [for SS system]  
100°C [for Copper alloy system]  
Pressure limits : Steady pressure up to 75% of FS value  
No over-pressure  
Weld joints : TIG argon arc welding [for SS system]  
Silver Alloy bracing [for Copper alloy system]

#### PRODUCT SPECIFICATION

##### STANDARD VERSION [CODE : 232C]

Dial size : 100mm / 150 mm  
Range : -25mbar...0...+600mbar  
Mounting pattern : Direct, Bottom connection  
Process connection :  $\frac{1}{2}$ " NPT (M) /  $\frac{1}{2}$ " BSP (M)  
Ingress protection : IP 54  
Execution : Dry  
Case & Ring material : AISI 304 SS (Bayonet type)  
Capsule & Shank : AISI 316 SS  
Movement mechanism : Copper alloy  
Dial : Aluminum, black graduation on white background  
with zero adjustment on dial  
Pointer : Fixed, aluminum, black powder coated  
Gasket & vent plug : Neoprene / NBR  
Window: Sheet glass / Shatterproof Safety Glass

#### PRODUCT SPECIFICATION

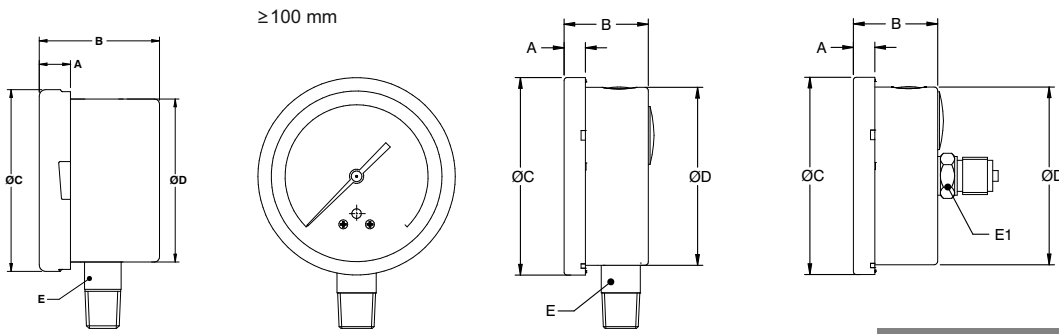
##### BRASS VERSION [CODE : 131C]

Dial size : 63mm / 100mm / 150 mm  
Range : -25mbar...0...+600mbar  
Capsule & Shank : AISI 316 SS

## DIMENSIONAL DRAWINGS

100mm / 150 mm

## MOUNTING ACCESSORIES



DN	A	B	ØC	ØD	E
63	12	43	70	62.5	SQ.14
100	12	90	111	100	A/F-22
150	15	90	161	149	A/F-22

### NOTES

- Drawing not to scale. All dimensions are in mm.
  - For other mounting details, Panel cut-out dimensions, kindly contact factory.
- All dimensions are in mm.

## MODEL CODING

MODEL	-	DIAL SIZE	MOUNTING	CONNECTION	CASE EXECUTION	/	RANGE	/
232C = Open front, Case SS 304, Capsule SS 316 131C = Utility, Case SS 304, Capsule Copper Alloy 242C = Open front, Case SS 316, Capsule SS 316 141B = Utility, Case SS 304, Capsule Copper Alloy		25 = 63 mm 04 = 100 mm 06 = 150 mm	B = Direct Bottom L = Lower Back C = Centre Back*  * Only for 63mm	M2N = ¼" NPT (M) M2B = ¼" BSP (M) M4N = ½" NPT (M) MBN = ½" BSP (M) M2M = M12 X 1.0P M4M = M20 X 1.5P M3B = ¾" BSP (M)	D = Dry		-25...0 to 0...600mbar or equivalent units	

OTHER OPTIONS		
BF = Back flange for bottom mounting FF = Front flange for lower back/center back mounting UC = "U" Clamp mounting for lower back mounting 2P = 2" Pipe mounting bracket for bottom mounting	XA = Tag plate in SS 304 XB = Tag plates in SS 316 XD = Custom Dial Design / Private labeling XP = Maximum Reading Pointer	TA = 5 - point factory calibration certificate TN = Tested to NACE standards TC = Material test certificate, 3.1

**ORDERING EXAMPLE**      232C-04.B.M4N.D/0-100mbar/TA.XA.

## QUICK ORDER DETAILS / FEEDBACKS

.....

.....

.....

.....

.....